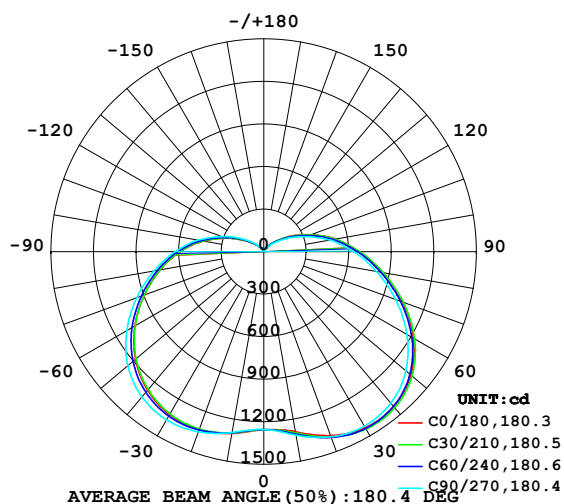


LUMINAIRE PHOTOMETRIC TEST REPORT

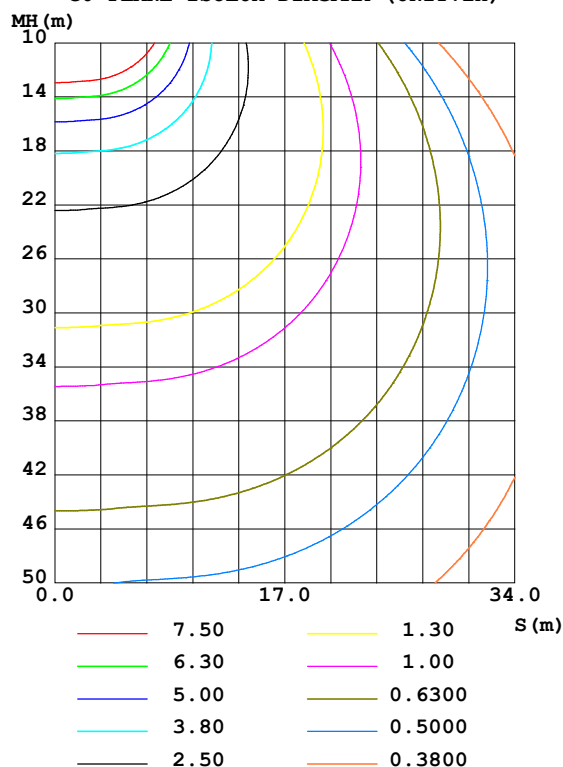
Test:U:220.12V I:0.3044A P:65.964W PF:0.9846 Freq:49.99Hz Lamp Flux:8350.83x1 lm		
NAME: Round X2 Series AC	TYPE:Floodlight	WEIGHT:N/A
SPEC.:RND-65-100-240-5K-180-X2-DLG-*	DIM.: N/A	SERIAL No.:N/A
MFR.: Red Sky Lighting	SUR.:N/A	Shielding Angle:N/A

DATA OF LAMP		PHOTOMETRIC DATA Eff: 126.60 lm/W			
MODEL	N/A	I _{max} (cd)	1449	S/MH(C0/180)	1.57
NOMINAL POWER(W)	65	LOR(%)	100.0	S/MH(C90/270)	1.63
RATED VOLTAGE(V)	220	TOTAL FLUX(lm)	8350.8	□ UP,DN(C0-180)	9.0,41.9
NOMINAL FLUX(lm)	8350.83	CIE CLASS	SEMI-D.	□ UP,DN(C180-360)	8.7,40.4
LAMPS INSIDE	1	□ up(%)	17.7	CIBSE SHR NOM	1.75
TEST VOLTAGE(V)	220	□ down(%)	82.3	CIBSE SHR MAX	1.75

LUMINOUS INTENSITY DISTRIBUTION DIAGRAM



C0 PLANE ISOLUX DIAGRAM (UNIT:lx)



C Range: 0 - 360DEG
 C Interval: 15.0DEG
 Test Speed: HIGH
 Temperature:25.3DEG
 Operators:YZY
 Test Date:30 November 2022

□ Range: 0 - 180DEG
 □ Interval: 1.0DEG
 Test System:EVERFINE GO-2000A_V1 SYSTEM V2.0.366
 Humidity:65.0%
 Test Distance:6.010m [K=1.0000]
 Remarks:

ZONAL FLUX DIAGRAM

ZONAL FLUX DIAGRAM:

☐	C0	C45	C90	C135	C180	C225	C270	C315	☐	☐ zone	☐ total	%lum, lamp
10	1289	1301	1314	1311	1302	1298	1294	1289	0- 10	122.1	122.1	1.46,1.46
20	1380	1392	1389	1363	1336	1333	1352	1367	10- 20	379.2	501.2	6,6
30	1433	1444	1421	1372	1328	1328	1370	1407	20- 30	639.2	1140	13.7,13.7
40	1426	1434	1394	1331	1276	1277	1337	1390	30- 40	864.9	2005	24,24
50	1353	1360	1308	1236	1181	1184	1251	1312	40- 50	1022	3027	36.2,36.2
60	1219	1221	1165	1096	1049	1055	1117	1177	50- 60	1083	4110	49.2,49.2
70	1043	1042	989.6	931.6	897.3	903.7	954.5	1007	60- 70	1047	5157	61.8,61.8
80	853.6	851.0	806.9	763.1	741.6	747.9	786.0	826.9	70- 80	934.5	6092	72.9,72.9
90	675.5	671.5	635.8	601.9	589.8	597.2	626.4	656.8	80- 90	778.9	6871	82.3,82.3
100	513.3	508.1	476.5	443.3	432.2	440.2	472.3	500.0	90-100	603.6	7474	89.5,89.5
110	350.6	343.6	314.1	288.4	280.0	287.1	312.6	338.3	100-110	415.2	7889	94.5,94.5
120	217.7	212.1	189.3	168.7	161.4	167.3	187.9	208.0	110-120	247.9	8137	97.4,97.4
130	119.2	115.3	101.6	89.36	85.44	89.77	98.89	112.8	120-130	127.7	8265	99,99
140	60.40	57.64	45.53	39.69	37.25	39.75	41.33	55.68	130-140	56.59	8322	99.7,99.7
150	27.63	27.38	16.62	18.68	16.18	18.35	20.40	23.52	140-150	20.60	8342	99.9,99.9
160	8.305	7.454	5.897	5.967	6.091	5.927	5.953	7.177	150-160	6.094	8348	100,100
170	6.443	6.569	6.803	6.969	7.190	7.012	7.012	6.558	160-170	1.790	8350	100,100
180	8.355	8.141	8.147	8.107	8.369	8.146	8.149	8.107	170-180	0.6840	8351	100,100
DEG	LUMINOUS INTENSITY:cd									UNIT:lm		

Conical surface Flux(90deg): 2502 lm

%lum = 30.0%

%lamp = 30.0%

Conical surface Flux(120deg): 4110.3 lm

%lum = 49.2%

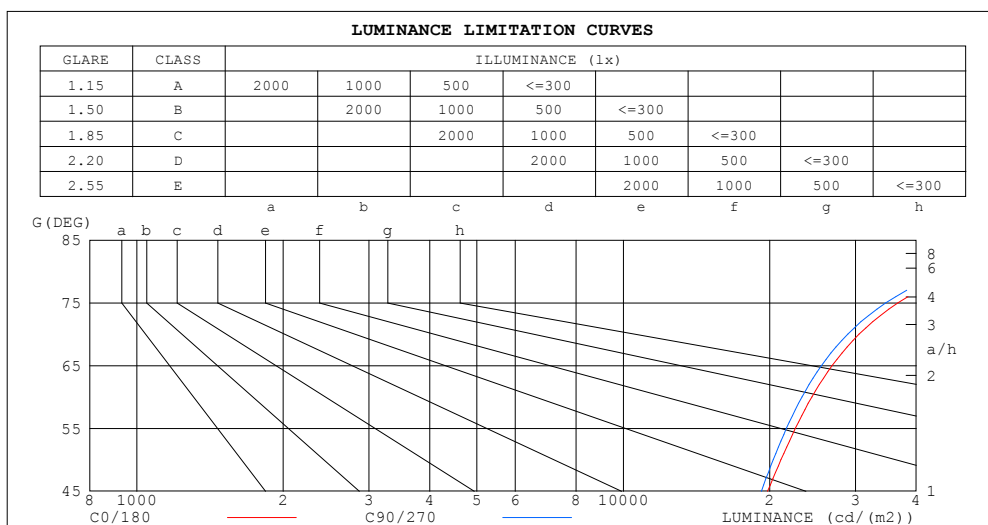
%lamp = 49.2%

C Range: 0 - 360DEG
 C Interval: 15.0DEG
 Test Speed: HIGH
 Temperature:25.3DEG
 Operators:YZY
 Test Date:30 November 2022

☐ Range: 0 - 180DEG
 ☐ Interval: 1.0DEG
 Test System:EVERFINE GO-2000A_V1 SYSTEM V2.0.366
 Humidity:65.0%
 Test Distance:6.010m [K=1.0000]
 Remarks:

LUMINANCE LIMITATION CURVES

Test:U:220.12V I:0.3044A P:65.964W PF:0.9846 Freq:49.99Hz Lamp Flux:8350.83x1 lm		
NAME: Round X2 Series AC	TYPE:Floodlight	WEIGHT:N/A
SPEC.:RND-65-100-240-5K-180-X2-DLG-*	DIM.: N/A	SERIAL No.:N/A
MFR.: Red Sky Lighting	SUR.:N/A	Shielding Angle:N/A



C Range: 0 - 360DEG
C Interval: 15.0DEG
Test Speed: HIGH
Temperature:25.3DEG
Operators:YZY
Test Date:30 November 2022

☐ Range: 0 - 180DEG
☐ Interval: 1.0DEG
Test System:EVERFINE GO-2000A_V1 SYSTEM V2.0.366
Humidity:65.0%
Test Distance:6.010m [K=1.0000]
Remarks:

☐ Range: 0 - 180DEG
☐ Interval: 1.0DEG
 Test System:EVERFINE GO-2000A_V1 SYSTEM V2.0.366
 Humidity:65.0%
 Test Distance:6.010m [K=1.0000]
 Remarks:

WEC AND CCEC

Test:U:220.12V I:0.3044A P:65.964W PF:0.9846 Freq:49.99Hz Lamp Flux:8350.83x1 lm		
NAME: Round X2 Series AC	TYPE:Floodlight	WEIGHT:N/A
SPEC.:RND-65-100-240-5K-180-X2-DLG-*	DIM.: N/A	SERIAL No.:N/A
MFR.: Red Sky Lighting	SUR.:N/A	Shielding Angle:N/A

□cc	80%	70%	50%	30%	10%	0
□w	50% 30% 10%	50% 30% 10%	50% 30% 10%	50% 30% 10%	50% 30% 10%	0
□fc	20%	20%	20%	20%	20%	0
RCR	RCR:Room Cavity Ratio Wall Exitance Coefficients(WEC)					
0.0						
1.0	.418 .238 .075	.406 .231 .074	.382 .219 .070	.360 .208 .067	.340 .197 .063	
2.0	.356 .195 .060	.344 .190 .058	.323 .180 .056	.303 .170 .053	.285 .161 .051	
3.0	.313 .167 .050	.303 .162 .049	.283 .153 .047	.265 .145 .045	.248 .137 .043	
4.0	.280 .145 .043	.270 .141 .042	.253 .134 .040	.236 .127 .038	.221 .120 .037	
5.0	.253 .129 .037	.244 .125 .037	.228 .119 .035	.213 .112 .033	.199 .106 .032	
6.0	.231 .116 .033	.223 .113 .032	.208 .107 .031	.194 .101 .030	.182 .096 .028	
7.0	.212 .105 .030	.205 .102 .029	.191 .097 .028	.179 .092 .027	.167 .087 .026	
8.0	.196 .096 .027	.189 .093 .026	.177 .089 .025	.166 .084 .024	.155 .079 .023	
9.0	.182 .088 .025	.176 .086 .024	.165 .082 .023	.154 .077 .022	.144 .073 .021	
10.0	.170 .082 .023	.165 .079 .022	.154 .076 .021	.144 .072 .020	.135 .068 .019	

□cc	80%	70%	50%	30%	10%	0
□w	50% 30% 10%	50% 30% 10%	50% 30% 10%	50% 30% 10%	50% 30% 10%	0
□fc	20%	20%	20%	20%	20%	0
RCR	RCR:Room Cavity Ratio Ceiling Cavity Exitance Coefficients(CCEC)					
0.0	.326 .326 .326	.278 .278 .278	.190 .190 .190	.109 .109 .109	.035 .035 .035	
1.0	.324 .291 .262	.277 .250 .225	.190 .172 .156	.109 .100 .091	.035 .032 .029	
2.0	.318 .269 .227	.272 .231 .197	.187 .160 .137	.108 .093 .080	.035 .030 .026	
3.0	.311 .252 .206	.266 .218 .179	.183 .151 .125	.106 .088 .074	.034 .029 .024	
4.0	.303 .240 .192	.260 .207 .167	.179 .145 .118	.103 .085 .070	.033 .028 .023	
5.0	.295 .230 .183	.253 .199 .159	.174 .139 .112	.101 .082 .067	.033 .027 .022	
6.0	.287 .223 .176	.247 .193 .153	.170 .135 .108	.099 .079 .064	.032 .026 .021	
7.0	.280 .216 .171	.241 .187 .149	.166 .131 .106	.097 .077 .063	.031 .025 .021	
8.0	.273 .210 .167	.235 .183 .146	.163 .128 .104	.095 .076 .062	.031 .025 .020	
9.0	.267 .206 .164	.230 .178 .143	.159 .125 .102	.093 .074 .061	.030 .024 .020	
10.0	.261 .201 .162	.225 .175 .141	.156 .123 .100	.091 .073 .060	.029 .024 .020	

C Range: 0 - 360DEG
 C Interval: 15.0DEG
 Test Speed: HIGH
 Temperature:25.3DEG
 Operators:YZY
 Test Date:30 November 2022

□ Range: 0 - 180DEG
 □ Interval: 1.0DEG
 Test System:EVERFINE GO-2000A_V1 SYSTEM V2.0.366
 Humidity:65.0%
 Test Distance:6.010m [K=1.0000]
 Remarks:

UGR(Unified Glare Rating) Table

Test:U:220.12V I:0.3044A P:65.964W PF:0.9846 Freq:49.99Hz Lamp Flux:8350.83x1 lm										
NAME: Round X2 Series AC					TYPE:Floodlight			WEIGHT:N/A		
SPEC.:RND-65-100-240-5K-180-X2-DLG-*					DIM.: N/A			SERIAL No.:N/A		
MFR.: Red Sky Lighting					SUR.:N/A			Shielding Angle:N/A		
ceiling/cavity	0.7	0.7	0.5	0.5	0.3	0.7	0.7	0.5	0.5	0.3
walls	0.5	0.3	0.5	0.3	0.3	0.5	0.3	0.5	0.3	0.3
working plane	0.2	0.2	0.2	0.2	0.2	0.2	0.2	0.2	0.2	0.2
Room dimensions	Viewed crosswise					Viewed endwise				
x = 2H y = 2H	15.7	17.1	16.2	17.6	18.2	15.5	16.9	16.0	17.4	18.0
3H	18.2	19.6	18.8	20.1	20.7	18.0	19.3	18.5	19.9	20.5
4H	19.6	20.9	20.2	21.4	22.1	19.3	20.6	19.9	21.2	21.8
6H	21.1	22.3	21.7	22.9	23.5	20.8	22.0	21.4	22.6	23.2
8H	21.9	23.1	22.5	23.7	24.3	21.6	22.7	22.2	23.3	24.0
12H	22.8	24.0	23.4	24.6	25.3	22.5	23.6	23.1	24.2	24.9
4H 2H	16.5	17.8	17.1	18.4	19.0	16.4	17.7	16.9	18.2	18.8
3H	19.3	20.4	19.9	21.0	21.7	19.1	20.2	19.7	20.8	21.5
4H	20.8	21.8	21.4	22.5	23.2	20.6	21.6	21.2	22.2	22.9
6H	22.5	23.4	23.1	24.0	24.8	22.2	23.1	22.8	23.8	24.5
8H	23.4	24.3	24.1	24.9	25.7	23.1	24.0	23.8	24.6	25.4
12H	24.4	25.2	25.1	25.9	26.7	24.1	24.9	24.8	25.6	26.4
8H 4H	21.4	22.2	22.0	22.9	23.7	21.2	22.1	21.9	22.7	23.5
6H	23.3	24.1	24.0	24.8	25.6	23.1	23.8	23.8	24.5	25.3
8H	24.4	25.1	25.1	25.8	26.6	24.2	24.9	24.9	25.6	26.4
12H	25.7	26.3	26.4	27.0	27.9	25.5	26.0	26.2	26.8	27.6
12H 4H	21.5	22.3	22.2	23.0	23.8	21.3	22.2	22.0	22.8	23.6
6H	23.6	24.2	24.3	25.0	25.8	23.4	24.0	24.1	24.8	25.6
8H	24.8	25.4	25.5	26.1	27.0	24.6	25.2	25.3	25.9	26.7
Variations with the observer position at spacings:										
S = 1.0H	+ 0.1 / - 0.1					+ 0.1 / - 0.1				
1.5H	+ 0.2 / - 0.3					+ 0.2 / - 0.3				
2.0H	+ 0.3 / - 0.4					+ 0.3 / - 0.4				

 CIE Pub.117, 8351 lm Total Lamp Luminous Flux Correct ($8\log(F/F_0) = 7.4$)

C Range: 0 - 360DEG
 C Interval: 15.0DEG
 Test Speed: HIGH
 Temperature:25.3DEG
 Operators:YZY
 Test Date:30 November 2022

☐ Range: 0 - 180DEG
☐ Interval: 1.0DEG
 Test System:EVERFINE GO-2000A_V1 SYSTEM V2.0.366
 Humidity:65.0%
 Test Distance:6.010m [K=1.0000]
 Remarks:

UTILIZATION FACTORS TABLE

Test:U:220.12V I:0.3044A P:65.964W PF:0.9846 Freq:49.99Hz Lamp Flux:8350.83x1 lm		
NAME: Round X2 Series AC	TYPE:Floodlight	WEIGHT:N/A
SPEC.:RND-65-100-240-5K-180-X2-DLG-*	DIM.: N/A	SERIAL No.:N/A
MFR.: Red Sky Lighting	SUR.:N/A	Shielding Angle:N/A

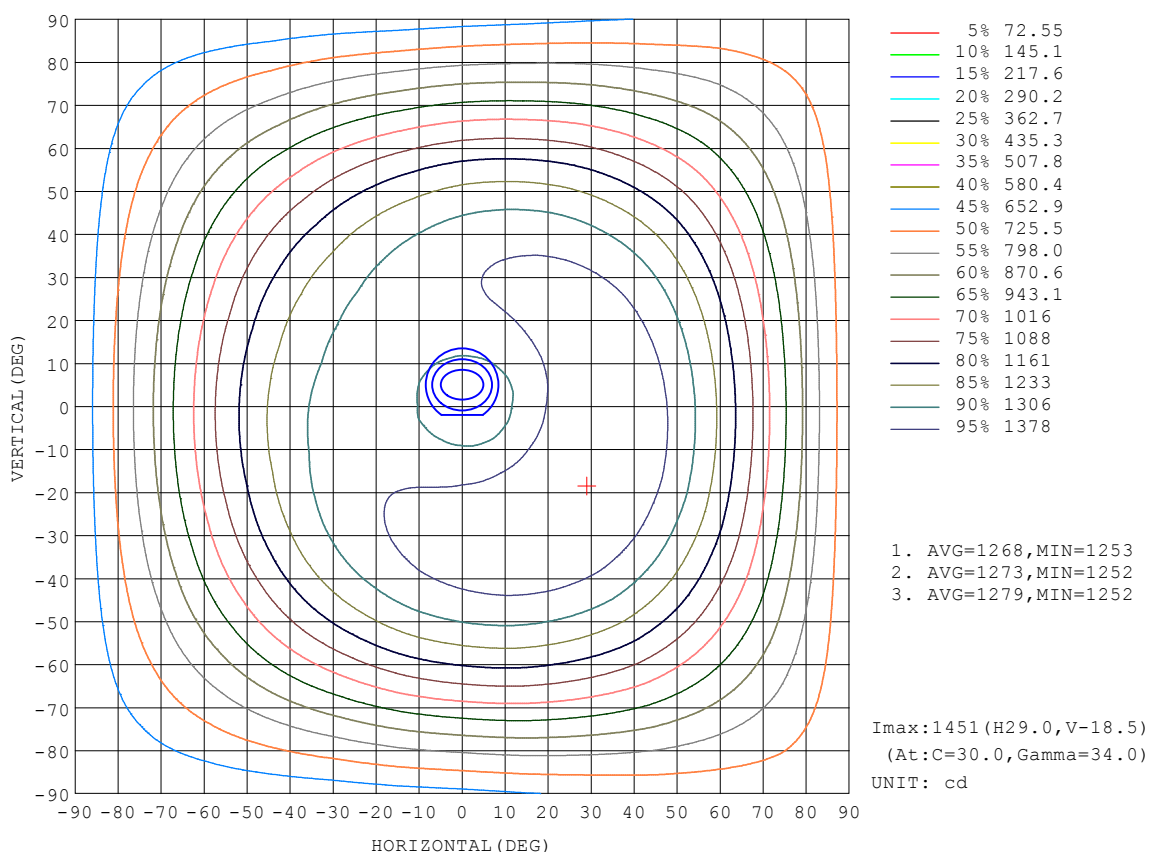
REFLECTANCE										
Ceiling	0.8	0.8	0.8	0.7	0.7	0.7	0.5	0.5	0.5	0
Walls	0.7	0.5	0.3	0.7	0.5	0.3	0.7	0.5	0.3	0
Working plane	0.2	0.2	0.2	0.2	0.2	0.2	0.2	0.2	0.2	0
ROOM INDEX	UTILIZATION FACTORS (PERCENT) $k(RI) \times RCR = 5$									
$k = 0.60$	45	32	24	44	32	24	42	31	24	17
0.80	54	40	32	53	40	32	50	38	31	23
1.00	62	48	39	60	47	39	56	48	38	29
1.25	69	55	46	66	54	45	62	52	44	34
1.50	74	61	52	71	59	51	67	56	49	38
2.00	82	70	61	79	68	59	73	64	57	45
2.50	86	75	67	83	73	65	77	68	62	49
3.00	90	80	72	87	77	70	80	73	66	53
4.00	95	87	79	91	84	77	84	78	72	58
5.00	98	91	84	94	88	82	87	81	77	61
ROOM INDEX	UF (total)									Direct
According to DIN EN 13032-2 2004			Suspended					SHRNM = 1.25		

C Range: 0 - 360DEG
 C Interval: 15.0DEG
 Test Speed: HIGH
 Temperature:25.3DEG
 Operators:YZY
 Test Date:30 November 2022

☐ Range: 0 - 180DEG
☐ Interval: 1.0DEG
 Test System:EVERFINE GO-2000A_V1 SYSTEM V2.0.366
 Humidity:65.0%
 Test Distance:6.010m [K=1.0000]
 Remarks:

ISOCANDELA DIAGRAM

Test:U:220.12V I:0.3044A P:65.964W PF:0.9846 Freq:49.99Hz Lamp Flux:8350.83x1 lm		
NAME: Round X2 Series AC	TYPE:Floodlight	WEIGHT:N/A
SPEC.:RND-65-100-240-5K-180-X2-DLG-*	DIM.: N/A	SERIAL No.:N/A
MFR.: Red Sky Lighting	SUR.:N/A	Shielding Angle:N/A



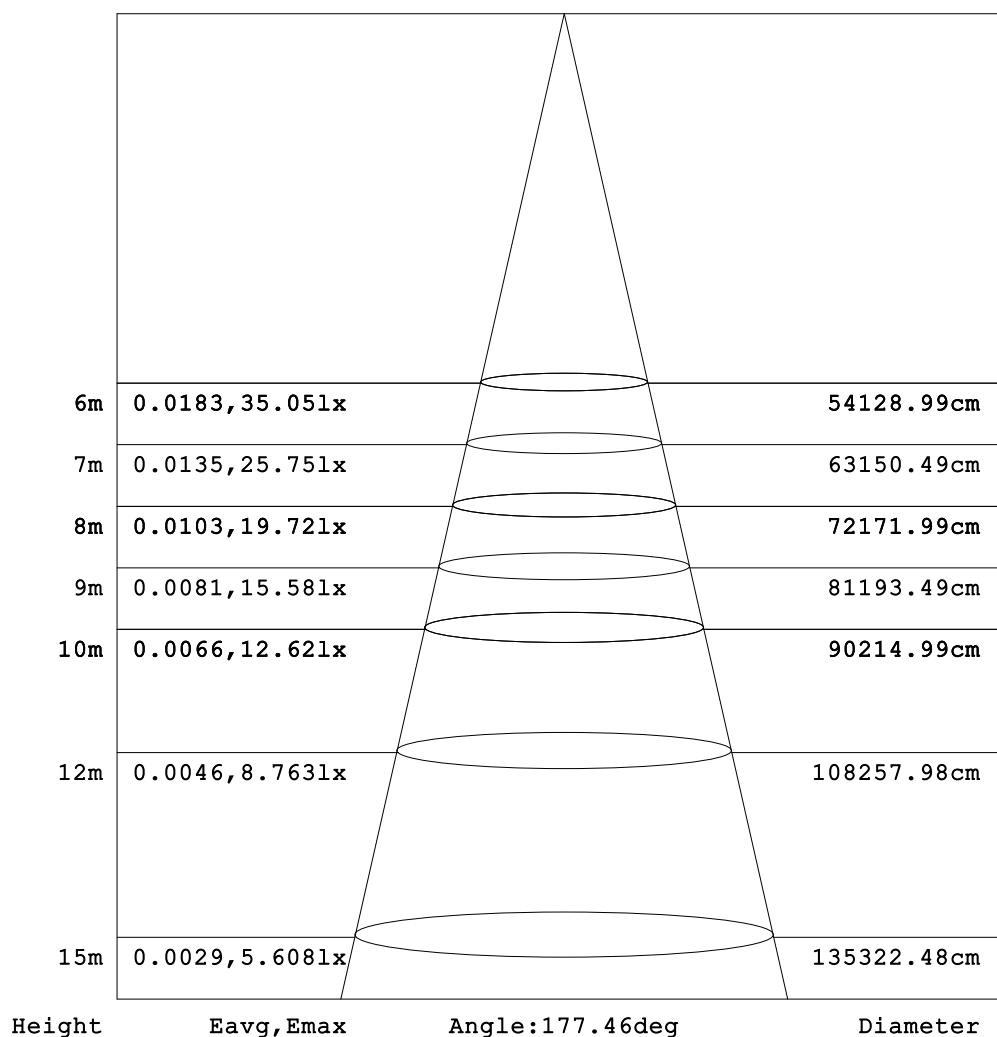
C Range: 0 - 360DEG
 C Interval: 15.0DEG
 Test Speed: HIGH
 Temperature:25.3DEG
 Operators:YZY
 Test Date:30 November 2022

☐ Range: 0 - 180DEG
☐ Interval: 1.0DEG
 Test System:EVERFINE GO-2000A_V1 SYSTEM V2.0.366
 Humidity:65.0%
 Test Distance:6.010m [K=1.0000]
 Remarks:

AAI Figure

Test:U:220.12V I:0.3044A P:65.964W PF:0.9846 Freq:49.99Hz Lamp Flux:8350.83x1 lm		
NAME: Round X2 Series AC	TYPE:Floodlight	WEIGHT:N/A
SPEC.:RND-65-100-240-5K-180-X2-DLG-*	DIM.: N/A	SERIAL No.:N/A
MFR.: Red Sky Lighting	SUR.:N/A	Shielding Angle:N/A

Flux out:6800 lm



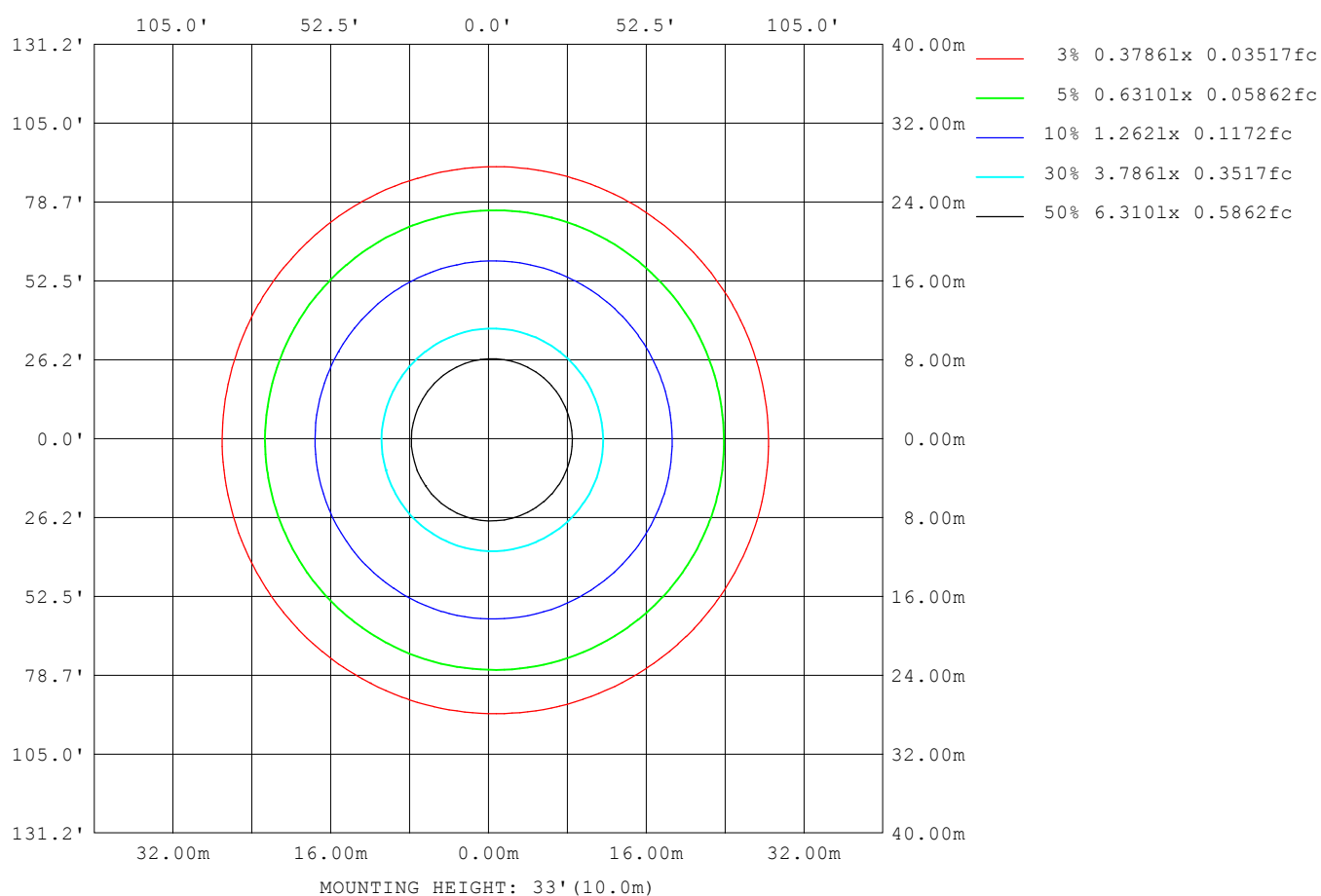
Note:The Curves indicate the illuminated area and the average illumination when the luminaire is at different distance.

C Range: 0 - 360DEG
 C Interval: 15.0DEG
 Test Speed: HIGH
 Temperature:25.3DEG
 Operators:YZY
 Test Date:30 November 2022

☐ Range: 0 - 180DEG
☐ Interval: 1.0DEG
 Test System:EVERFINE GO-2000A_V1 SYSTEM V2.0.366
 Humidity:65.0%
 Test Distance:6.010m [K=1.0000]
 Remarks:

ISOLUX DIAGRAM

Test:U:220.12V I:0.3044A P:65.964W PF:0.9846 Freq:49.99Hz Lamp Flux:8350.83x1 lm		
NAME: Round X2 Series AC	TYPE:Floodlight	WEIGHT:N/A
SPEC.:RND-65-100-240-5K-180-X2-DLG-*	DIM.: N/A	SERIAL No.:N/A
MFR.: Red Sky Lighting	SUR.:N/A	Shielding Angle:N/A



C Range: 0 - 360DEG
 C Interval: 15.0DEG
 Test Speed: HIGH
 Temperature:25.3DEG
 Operators:YZY
 Test Date:30 November 2022

☐ Range: 0 - 180DEG
☐ Interval: 1.0DEG
 Test System:EVERFINE GO-2000A_V1 SYSTEM V2.0.366
 Humidity:65.0%
 Test Distance:6.010m [K=1.0000]
 Remarks:

LED Avg.L Report

Test:U:220.12V I:0.3044A P:65.964W PF:0.9846 Freq:49.99Hz Lamp Flux:8350.83x1 lm		
NAME: Round X2 Series AC	TYPE:Floodlight	WEIGHT:N/A
SPEC.:RND-65-100-240-5K-180-X2-DLG-*	DIM.: N/A	SERIAL No.:N/A
MFR.: Red Sky Lighting	SUR.:N/A	Shielding Angle:N/A

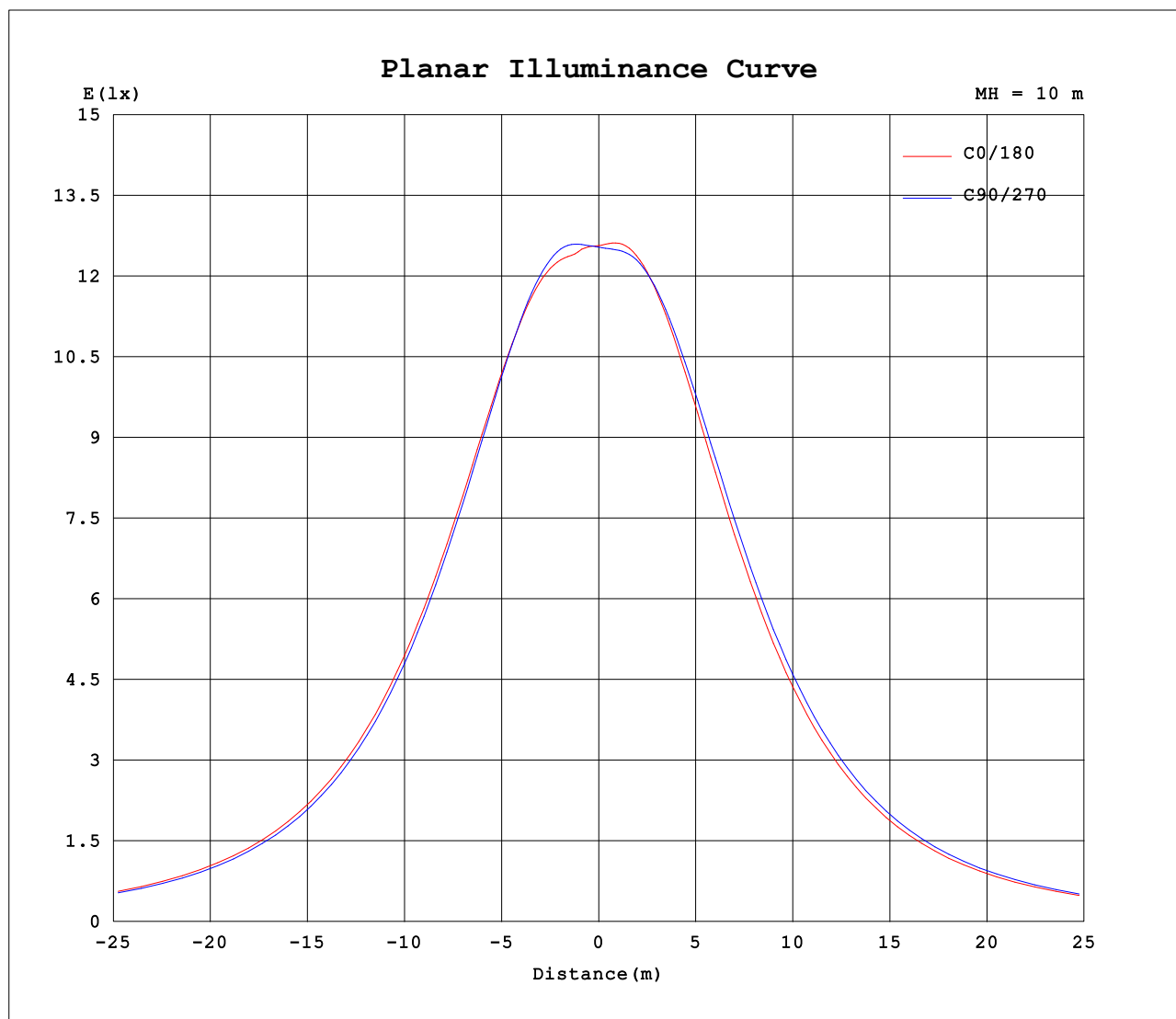
AvgL	cd/m2
L_0~180 (65) av	24951
L_0~180 (75) av	34135
L_0~180 (85) av	81910
L_90~270 (65) av	25050
L_90~270 (75) av	34144
L_90~270 (85) av	81737
L_45 (65) av	24997
L_45 (75) av	34145
L_45 (85) av	81824

Standard: GB/T 29293-2012

C Range: 0 - 360DEG
 C Interval: 15.0DEG
 Test Speed: HIGH
 Temperature:25.3DEG
 Operators:YZY
 Test Date:30 November 2022

☐ Range: 0 - 180DEG
☐ Interval: 1.0DEG
 Test System:EVERFINE GO-2000A_V1 SYSTEM V2.0.366
 Humidity:65.0%
 Test Distance:6.010m [K=1.0000]
 Remarks:

Planar Illuminance Curve



C Range: 0 - 360DEG
C Interval: 15.0DEG
Test Speed: HIGH
Temperature: 25.3DEG
Operators: YZY
Test Date: 30 November 2022

☐ Range: 0 - 180DEG
☐ Interval: 1.0DEG
Test System: EVERFINE GO-2000A_V1 SYSTEM V2.0.366
Humidity: 65.0%
Test Distance: 6.010m [K=1.0000]
Remarks:

LUMINOUS DISTRIBUTION INTENSITY DATA

Test:U:220.12V I:0.3044A P:65.964W PF:0.9846 Freq:49.99Hz Lamp Flux:8350.83x1 lm		
NAME: Round X2 Series AC	TYPE:Floodlight	WEIGHT:N/A
SPEC.:RND-65-100-240-5K-180-X2-DLG-*	DIM.: N/A	SERIAL No.:N/A
MFR.: Red Sky Lighting	SUR.:N/A	Shielding Angle:N/A

Table--1

UNIT: cd

C (DEG) □ (DEG)	0	15	30	45	60	75	90	105	120	135	150	165	180	195	210	225	240	255	270
0	1254	1254	1254	1254	1254	1254	1254	1254	1254	1254	1254	1254	1254	1254	1254	1254	1254	1254	1254
5	1262	1262	1264	1265	1268	1270	1274	1275	1277	1277	1277	1275	1274	1273	1271	1271	1268	1267	1264
10	1289	1292	1297	1301	1307	1310	1314	1314	1314	1311	1308	1304	1302	1300	1298	1298	1296	1296	1294
15	1337	1340	1346	1349	1354	1355	1356	1352	1348	1341	1335	1328	1323	1320	1319	1320	1322	1325	1327
20	1380	1385	1390	1392	1394	1392	1389	1383	1374	1363	1352	1342	1336	1331	1331	1333	1339	1345	1352
25	1413	1419	1424	1425	1424	1419	1412	1402	1389	1374	1359	1346	1337	1332	1332	1336	1345	1356	1367
30	1433	1440	1445	1444	1440	1431	1421	1407	1390	1372	1354	1338	1328	1321	1322	1328	1340	1355	1370
35	1438	1446	1449	1447	1439	1428	1414	1398	1378	1358	1336	1318	1307	1299	1300	1308	1323	1341	1360
40	1426	1434	1437	1434	1424	1411	1394	1376	1353	1331	1307	1288	1276	1267	1269	1277	1295	1315	1337
45	1398	1407	1409	1405	1393	1378	1359	1339	1314	1290	1265	1246	1234	1225	1228	1236	1255	1277	1301
50	1353	1364	1365	1360	1345	1329	1308	1287	1260	1236	1211	1192	1181	1173	1176	1184	1204	1226	1251
55	1293	1304	1303	1297	1282	1265	1242	1221	1194	1171	1147	1129	1119	1111	1115	1123	1142	1163	1189
60	1219	1229	1228	1221	1205	1188	1165	1145	1118	1096	1074	1058	1049	1043	1047	1055	1073	1092	1117
65	1134	1144	1142	1135	1119	1102	1080	1060	1035	1015	995	982	975	970	974	981	998	1015	1037
70	1043	1051	1048	1042	1026	1011	990	972	948	932	914	903	897	893	898	904	919	934	955
75	948	955	952	946	931	917	898	882	861	847	832	823	819	816	820	825	839	852	870
80	854	860	856	851	838	825	807	793	775	763	752	745	742	740	744	748	760	770	786
85	762	768	763	759	748	736	720	708	691	682	672	667	665	665	669	672	683	691	705
90	675	680	676	672	661	651	636	625	610	602	594	591	590	590	594	597	607	615	626
95	593	596	592	588	577	568	554	544	531	525	518	516	516	516	520	523	532	538	549
100	513	516	512	508	499	490	477	465	451	443	435	433	432	431	437	440	450	459	472
105	431	433	428	424	413	404	391	381	368	361	354	353	352	351	356	360	369	376	388
110	351	352	348	344	334	326	314	305	294	288	282	281	280	279	284	287	295	302	313
115	280	281	277	273	265	258	248	239	230	225	219	218	217	216	221	223	231	236	246
120	218	219	215	212	205	199	189	182	173	169	163	162	161	161	165	167	174	179	188
125	164	164	161	159	152	147	139	133	126	122	119	118	117	118	120	122	125	131	138
130	119	119	117	115	111	107	102	95.9	90.9	89.4	86.6	85.6	85.4	85.9	87.7	89.8	90.6	94.4	98.9
135	87.4	87.0	86.0	84.0	80.4	75.7	70.7	66.1	62.0	61.6	59.1	58.8	58.6	58.7	60.5	61.8	61.6	63.7	67.6
140	60.4	60.3	58.9	57.6	54.2	50.1	45.5	42.6	39.6	39.7	37.8	37.5	37.3	37.3	38.7	39.7	39.1	38.5	41.3
145	38.8	39.0	38.0	37.2	35.0	31.3	29.0	26.7	28.3	28.7	28.3	28.4	28.3	28.4	28.7	29.0	28.4	25.4	25.5
150	27.6	27.7	27.5	27.4	26.6	25.7	16.6	15.9	20.3	18.7	17.2	16.5	16.2	16.3	17.4	18.4	20.1	18.6	20.4
155	17.9	18.1	17.5	16.9	15.4	14.1	8.93	8.45	9.22	8.20	7.44	7.10	6.92	6.94	7.56	8.10	9.22	8.63	7.86
160	8.30	8.31	7.85	7.45	6.77	6.28	5.90	5.99	5.96	5.97	5.97	6.03	6.09	6.00	5.93	5.93	5.96	6.03	5.95
165	5.92	5.92	5.99	5.95	6.03	6.19	6.35	6.49	6.56	6.47	6.44	6.43	6.57	6.48	6.46	6.51	6.60	6.59	6.46
170	6.44	6.51	6.55	6.57	6.67	6.72	6.80	7.01	7.06	6.97	6.86	6.92	7.19	7.03	6.92	7.01	7.12	7.15	7.01
175	7.07	7.04	7.05	7.07	7.11	7.09	7.17	7.32	7.38	7.27	7.19	7.44	7.65	7.59	7.37	7.34	7.46	7.45	7.35
180	8.36	8.39	8.31	8.14	8.15	8.17	8.15	8.15	8.13	8.11	8.26	8.44	8.37	8.39	8.31	8.15	8.16	8.16	8.15

C Range: 0 - 360DEG

C Interval: 15.0DEG

Test Speed: HIGH

Temperature:25.3DEG

Operators:YZY

Test Date:30 November 2022

□ Range: 0 - 180DEG

□ Interval: 1.0DEG

Test System:EVERFINE GO-2000A_V1 SYSTEM V2.0.366

Humidity:65.0%

Test Distance:6.010m [K=1.0000]

Remarks:

LUMINOUS DISTRIBUTION INTENSITY DATA

Test:U:220.12V I:0.3044A P:65.964W PF:0.9846 Freq:49.99Hz Lamp Flux:8350.83x1 lm		
NAME: Round X2 Series AC	TYPE:Floodlight	WEIGHT:N/A
SPEC.:RND-65-100-240-5K-180-X2-DLG-*	DIM.: N/A	SERIAL No.:N/A
MFR.: Red Sky Lighting	SUR.:N/A	Shielding Angle:N/A

Table--2

UNIT: cd

C (DEG) □ (DEG)	285	300	315	330	345														
0	1254	1254	1254	1254	1254														
5	1262	1259	1258	1258	1261														
10	1293	1290	1289	1286	1287														
15	1329	1329	1330	1330	1333														
20	1358	1362	1367	1370	1376														
25	1378	1385	1393	1400	1408														
30	1385	1396	1407	1417	1427														
35	1378	1393	1407	1419	1430														
40	1357	1375	1390	1405	1417														
45	1322	1342	1359	1376	1389														
50	1273	1294	1312	1331	1344														
55	1210	1232	1250	1270	1284														
60	1137	1159	1177	1196	1210														
65	1057	1077	1094	1113	1126														
70	971	991	1007	1025	1036														
75	885	903	917	933	942														
80	799	815	827	842	849														
85	717	730	740	754	759														
90	636	648	657	669	673														
95	557	569	577	587	591														
100	482	493	500	509	512														
105	397	410	417	427	430														
110	321	332	338	347	349														
115	253	263	269	276	278														
120	194	203	208	214	216														
125	143	151	155	161	162														
130	103	108	113	116	118														
135	71.8	76.9	82.1	84.5	86.5														
140	44.8	51.6	55.7	58.3	59.3														
145	26.8	33.0	35.6	37.5	38.1														
150	22.5	23.9	23.5	27.3	27.4														
155	13.3	15.1	16.3	16.5	17.6														
160	6.04	6.62	7.18	7.73	8.06														
165	6.27	6.02	5.89	5.88	5.83														
170	6.85	6.71	6.56	6.49	6.43														
175	7.24	7.16	7.12	7.06	6.94														
180	8.14	8.12	8.11	8.26	8.43														

C Range: 0 - 360DEG
 C Interval: 15.0DEG
 Test Speed: HIGH
 Temperature:25.3DEG
 Operators:YZY
 Test Date:30 November 2022

□ Range: 0 - 180DEG
 □ Interval: 1.0DEG
 Test System:EVERFINE GO-2000A_V1 SYSTEM V2.0.366
 Humidity:65.0%
 Test Distance:6.010m [K=1.0000]
 Remarks: