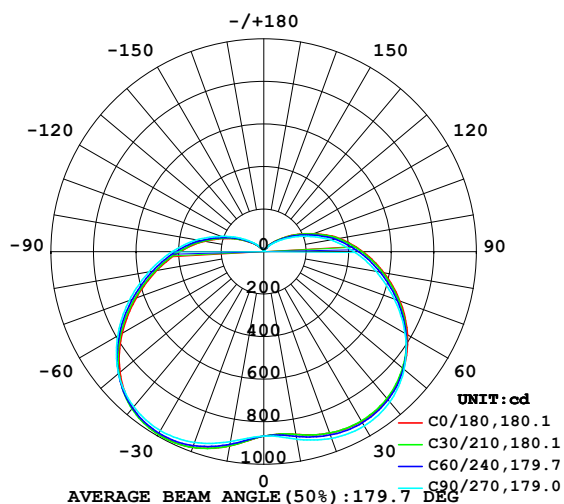


**LUMINAIRE PHOTOMETRIC TEST REPORT**

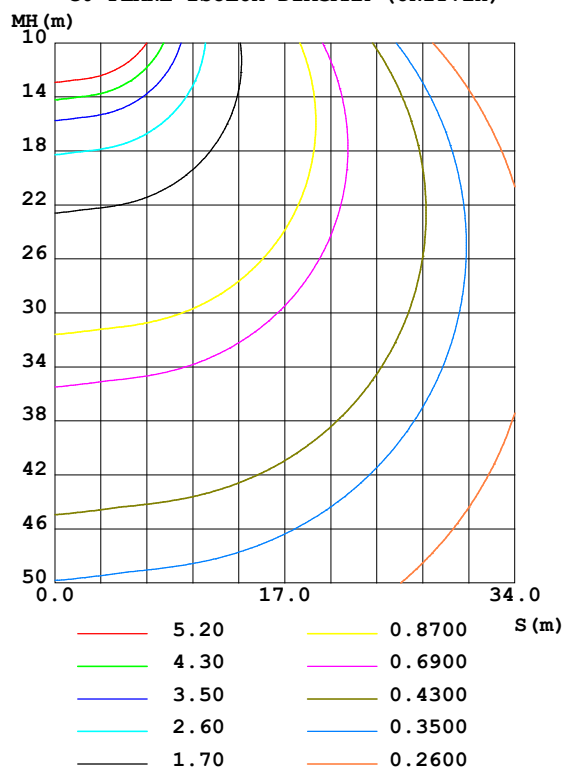
Test:U:220.21V I:0.2075A P:44.281W PF:0.9689 Freq:49.99Hz Lamp Flux:5714.16x1 lm		
NAME: Round X2 Series AC-EM	TYPE:Floodlight	WEIGHT:N/A
SPEC.:RND-45-100-240-5K-180-X2-DLG-*-EM	DIM.: N/A	SERIAL No.:N/A
MFR.: Red Sky Lighting	SUR.:N/A	Shielding Angle:N/A

DATA OF LAMP		PHOTOMETRIC DATA Eff: 129.04 lm/W			
MODEL	N/A	I <sub>max</sub> (cd)	993.4	S/MH(C0/180)	1.68
NOMINAL POWER(W)	45	LOR(%)	100.0	S/MH(C90/270)	1.67
RATED VOLTAGE(V)	220	TOTAL FLUX(lm)	5714.2	□ UP,DN(C0-180)	8.9,40.8
NOMINAL FLUX(lm)	5714.16	CIE CLASS	SEMI-D.	□ UP,DN(C180-360)	8.7,41.6
LAMPS INSIDE	1	□ up(%)	17.6	CIBSE SHR NOM	1.75
TEST VOLTAGE(V)	220	□ down(%)	82.4	CIBSE SHR MAX	1.75

LUMINOUS INTENSITY DISTRIBUTION DIAGRAM



C0 PLANE ISOLUX DIAGRAM (UNIT:lx)



C Range: 0 - 360DEG  
 C Interval: 15.0DEG  
 Test Speed: HIGH  
 Temperature:25.3DEG  
 Operators:YZY  
 Test Date:30 November 2022

□ Range: 0 - 180DEG  
 □ Interval: 1.0DEG  
 Test System:EVERFINE GO-2000A\_V1 SYSTEM V2.0.366  
 Humidity:65.0%  
 Test Distance:6.010m [K=1.0000]  
 Remarks:

## ZONAL FLUX DIAGRAM

### ZONAL FLUX DIAGRAM:

°	C0	C45	C90	C135	C180	C225	C270	C315	°	□ zone	□ total	%lum, lamp
10	872.0	875.6	894.8	915.3	927.1	924.3	906.5	885.0	0- 10	84.46	84.46	1.48,1.48
20	907.6	910.3	933.7	961.8	978.7	975.7	953.9	926.4	10- 20	262.5	346.9	6.07,6.07
30	920.6	922.0	945.7	972.9	990.8	989.7	971.6	943.8	20- 30	441.4	788.3	13.8,13.8
40	904.6	903.8	922.5	942.5	960.0	962.2	951.7	929.1	30- 40	595.8	1384	24.2,24.2
50	857.0	853.7	861.4	868.8	882.6	889.0	891.3	879.0	40- 50	701.6	2086	36.5,36.5
60	780.2	773.8	766.9	760.6	768.8	778.3	793.3	794.1	50- 60	741.2	2827	49.5,49.5
70	681.6	672.8	653.4	636.2	638.4	649.5	673.1	686.4	60- 70	714.0	3541	62,62
80	573.3	563.0	536.1	513.6	510.7	521.5	548.3	570.4	70- 80	635.8	4177	73.1,73.1
90	466.2	455.2	425.3	399.4	394.1	404.5	431.7	457.5	80- 90	529.3	4706	82.4,82.4
100	361.9	351.4	320.9	293.7	284.6	292.6	321.7	350.7	90-100	410.2	5116	89.5,89.5
110	249.0	239.9	213.1	191.5	183.6	189.4	211.8	236.6	100-110	282.8	5399	94.5,94.5
120	154.1	148.2	128.6	112.0	106.0	110.9	126.4	144.8	110-120	169.2	5568	97.4,97.4
130	83.91	80.06	68.70	59.70	56.83	59.78	67.55	78.74	120-130	87.07	5655	99,99
140	42.21	40.18	31.19	27.09	25.40	27.31	28.51	38.63	130-140	38.75	5694	99.6,99.6
150	19.88	19.25	11.42	12.98	11.52	12.87	13.81	18.42	140-150	14.16	5708	99.9,99.9
160	5.262	4.954	4.159	4.142	4.100	4.009	4.117	4.678	150-160	4.211	5712	100,100
170	4.615	4.719	4.881	4.913	5.052	4.919	4.997	4.714	160-170	1.249	5714	100,100
180	6.227	6.017	5.985	5.962	6.239	6.017	5.988	5.962	170-180	0.4918	5714	100,100
DEG	LUMINOUS INTENSITY:cd									UNIT:lm		

Conical surface Flux(90deg): 1725.6 lm

%lum = 30.2%

%lamp = 30.2%

Conical surface Flux(120deg): 2826.9 lm

%lum = 49.5%

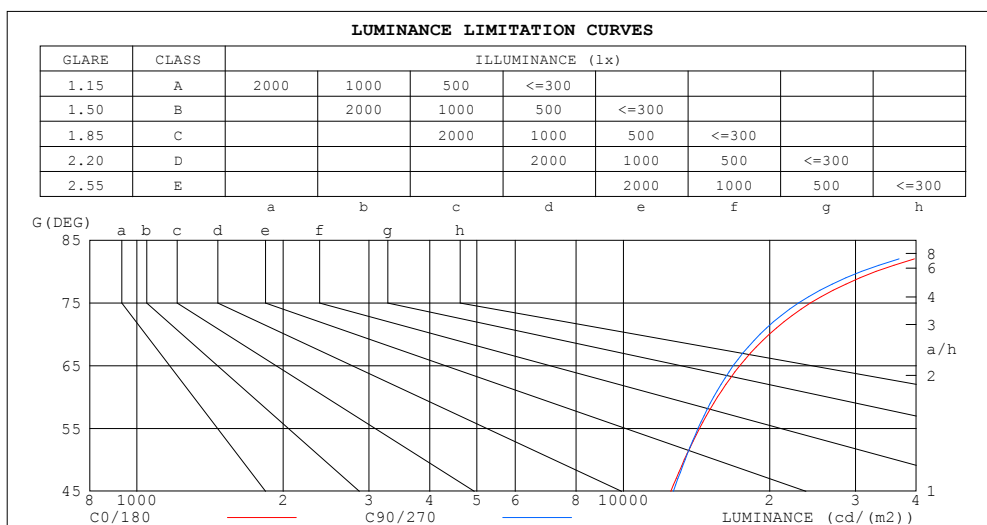
%lamp = 49.5%

C Range: 0 - 360DEG  
 C Interval: 15.0DEG  
 Test Speed: HIGH  
 Temperature:25.3DEG  
 Operators:YZY  
 Test Date:30 November 2022

□ Range: 0 - 180DEG  
 □ Interval: 1.0DEG  
 Test System:EVERFINE GO-2000A\_V1 SYSTEM V2.0.366  
 Humidity:65.0%  
 Test Distance:6.010m [K=1.0000]  
 Remarks:

## LUMINANCE LIMITATION CURVES

Test:U:220.21V I:0.2075A P:44.281W PF:0.9689 Freq:49.99Hz Lamp Flux:5714.16x1 lm		
NAME: Round X2 Series AC-EM	TYPE:Floodlight	WEIGHT:N/A
SPEC.:RND-45-100-240-5K-180-X2-DLG-*--EM	DIM.: N/A	SERIAL No.:N/A
MFR.: Red Sky Lighting	SUR.:N/A	Shielding Angle:N/A



LUMINANCE cd/(m2)		
G (DEG)	C0/180	C90/270
85	59654	55110
80	33062	30870
75	24292	22957
70	19958	19102
65	17368	16839
60	15627	15338
55	14351	14251
50	13352	13400
45	12526	12681

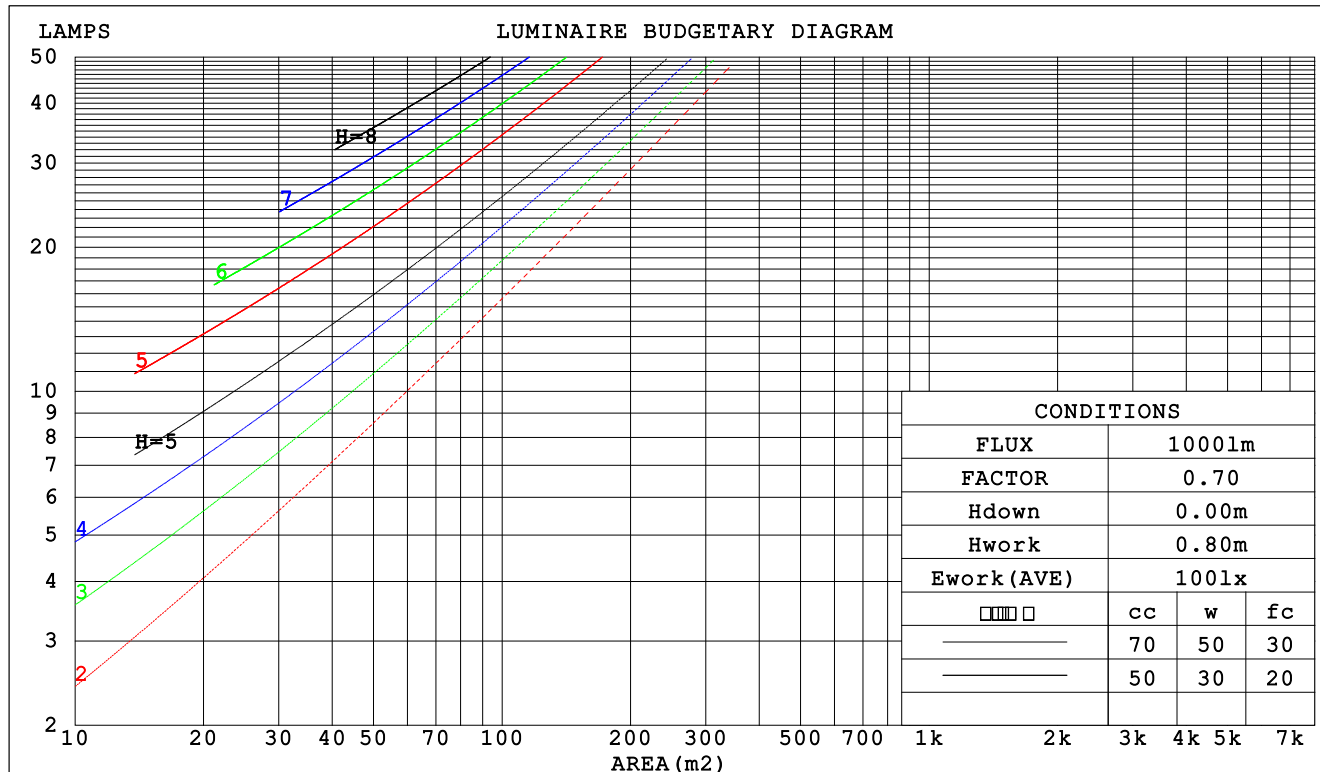
C Range: 0 - 360DEG  
C Interval: 15.0DEG  
Test Speed: HIGH  
Temperature:25.3DEG  
Operators:YZY  
Test Date:30 November 2022

☐ Range: 0 - 180DEG  
☐ Interval: 1.0DEG  
Test System:EVERFINE GO-2000A\_V1 SYSTEM V2.0.366  
Humidity:65.0%  
Test Distance:6.010m [K=1.0000]  
Remarks:

**CU AND LUMINAIRE BUDGETARY ESTIMATE DIAGRAM**

Test:U:220.21V I:0.2075A P:44.281W PF:0.9689 Freq:49.99Hz Lamp Flux:5714.16x1 lm		
NAME: Round X2 Series AC-EM	TYPE:Floodlight	WEIGHT:N/A
SPEC.:RND-45-100-240-5K-180-X2-DLG-*-EM	DIM.: N/A	SERIAL No.:N/A
MFR.: Red Sky Lighting	SUR.:N/A	Shielding Angle:N/A

□cc	80%			70%			50%			30%			10%			0														
□w	50%	30%	10%	50%	30%	10%	50%	30%	10%	50%	30%	10%	50%	30%	10%	0														
□fc	20%			20%			20%			20%			20%			0														
RCR	RCR:Room Cavity Ratio															Coefficients of Utilization(CU)														
0.0	1.15	1.15	1.15	1.10	1.10	1.10	1.01	1.01	1.01	.93	.93	.93	.86	.86	.86	.82														
1.0	.94	.88	.83	.90	.85	.80	.82	.78	.74	.75	.72	.69	.69	.66	.64	.60														
2.0	.80	.71	.64	.76	.68	.62	.70	.63	.58	.63	.58	.54	.58	.54	.50	.47														
3.0	.68	.59	.51	.65	.57	.50	.60	.53	.47	.55	.49	.44	.50	.45	.41	.37														
4.0	.60	.50	.42	.57	.48	.41	.52	.45	.38	.48	.41	.36	.44	.38	.34	.31														
5.0	.53	.43	.35	.50	.41	.34	.46	.38	.32	.42	.36	.30	.39	.33	.29	.26														
6.0	.47	.37	.30	.45	.36	.29	.41	.34	.28	.38	.31	.26	.35	.29	.25	.22														
7.0	.42	.33	.26	.41	.32	.26	.37	.30	.24	.34	.28	.23	.32	.26	.21	.19														
8.0	.38	.29	.23	.37	.28	.22	.34	.26	.21	.31	.25	.20	.29	.23	.19	.17														
9.0	.35	.26	.20	.34	.25	.20	.31	.24	.19	.29	.22	.18	.26	.21	.17	.15														
10.0	.32	.24	.18	.31	.23	.18	.29	.22	.17	.26	.20	.16	.24	.19	.15	.13														



C Range: 0 - 360DEG  
 C Interval: 15.0DEG  
 Test Speed: HIGH  
 Temperature:25.3DEG  
 Operators:YZY  
 Test Date:30 November 2022

□ Range: 0 - 180DEG  
 □ Interval: 1.0DEG  
 Test System:EVERFINE GO-2000A\_V1 SYSTEM V2.0.366  
 Humidity:65.0%  
 Test Distance:6.010m [K=1.0000]  
 Remarks:

**WEC AND CCEC**

Test:U:220.21V I:0.2075A P:44.281W PF:0.9689 Freq:49.99Hz Lamp Flux:5714.16x1 lm		
NAME: Round X2 Series AC-EM	TYPE:Floodlight	WEIGHT:N/A
SPEC.:RND-45-100-240-5K-180-X2-DLG-*-EM	DIM.: N/A	SERIAL No.:N/A
MFR.: Red Sky Lighting	SUR.:N/A	Shielding Angle:N/A

<input type="checkbox"/> cc	80%	70%	50%	30%	10%	0
<input type="checkbox"/> w	50% 30% 10%	50% 30% 10%	50% 30% 10%	50% 30% 10%	50% 30% 10%	0
<input type="checkbox"/> fc	20%	20%	20%	20%	20%	0
RCR	RCR:Room Cavity Ratio Wall Exitance Coefficients (WEC)					
0.0						
1.0	.417 .237 .075	.405 .231 .073	.381 .218 .070	.359 .207 .066	.339 .196 .063	
2.0	.355 .195 .060	.344 .189 .058	.322 .179 .056	.302 .170 .053	.284 .161 .051	
3.0	.312 .166 .050	.302 .162 .049	.283 .153 .047	.264 .145 .044	.248 .137 .042	
4.0	.279 .145 .043	.270 .141 .042	.252 .134 .040	.236 .127 .038	.220 .120 .036	
5.0	.252 .129 .037	.244 .125 .036	.228 .119 .035	.213 .112 .033	.199 .106 .032	
6.0	.230 .115 .033	.223 .112 .032	.208 .107 .031	.194 .101 .030	.182 .096 .028	
7.0	.212 .105 .030	.205 .102 .029	.191 .097 .028	.179 .092 .027	.167 .087 .025	
8.0	.196 .096 .027	.189 .093 .026	.177 .088 .025	.166 .084 .024	.155 .079 .023	
9.0	.182 .088 .025	.176 .086 .024	.165 .081 .023	.154 .077 .022	.144 .073 .021	
10.0	.170 .081 .023	.164 .079 .022	.154 .075 .021	.144 .072 .020	.135 .068 .019	

<input type="checkbox"/> cc	80%	70%	50%	30%	10%	0
<input type="checkbox"/> w	50% 30% 10%	50% 30% 10%	50% 30% 10%	50% 30% 10%	50% 30% 10%	0
<input type="checkbox"/> fc	20%	20%	20%	20%	20%	0
RCR	RCR:Room Cavity Ratio Ceiling Cavity Exitance Coefficients (CCEC)					
0.0	.325 .325 .325	.278 .278 .278	.190 .190 .190	.109 .109 .109	.035 .035 .035	
1.0	.323 .291 .261	.277 .250 .225	.189 .172 .156	.109 .099 .090	.035 .032 .029	
2.0	.317 .268 .227	.272 .231 .196	.186 .160 .137	.107 .093 .080	.034 .030 .026	
3.0	.310 .252 .205	.266 .217 .178	.182 .151 .125	.105 .088 .074	.034 .029 .024	
4.0	.302 .239 .192	.259 .207 .166	.178 .144 .117	.103 .084 .069	.033 .027 .023	
5.0	.294 .230 .182	.253 .199 .158	.174 .139 .112	.101 .082 .066	.032 .027 .022	
6.0	.287 .222 .175	.246 .192 .153	.170 .134 .108	.099 .079 .064	.032 .026 .021	
7.0	.279 .215 .170	.240 .187 .149	.166 .131 .105	.096 .077 .063	.031 .025 .021	
8.0	.272 .210 .167	.234 .182 .145	.162 .128 .103	.094 .075 .061	.031 .025 .020	
9.0	.266 .205 .164	.229 .178 .143	.159 .125 .101	.092 .074 .060	.030 .024 .020	
10.0	.260 .201 .161	.224 .174 .141	.155 .123 .100	.091 .073 .060	.029 .024 .020	

C Range: 0 - 360DEG  
 C Interval: 15.0DEG  
 Test Speed: HIGH  
 Temperature:25.3DEG  
 Operators:YZY  
 Test Date:30 November 2022

☐ Range: 0 - 180DEG  
☐ Interval: 1.0DEG  
 Test System:EVERFINE GO-2000A\_V1 SYSTEM V2.0.366  
 Humidity:65.0%  
 Test Distance:6.010m [K=1.0000]  
 Remarks:

**UGR(Unified Glare Rating) Table**

Test:U:220.21V I:0.2075A P:44.281W PF:0.9689 Freq:49.99Hz Lamp Flux:5714.16x1 lm										
NAME: Round X2 Series AC-EM					TYPE:Floodlight			WEIGHT:N/A		
SPEC.:RND-45-100-240-5K-180-X2-DLG-*-EM					DIM.: N/A			SERIAL No.:N/A		
MFR.: Red Sky Lighting					SUR.:N/A			Shielding Angle:N/A		
ceiling/cavity	0.7	0.7	0.5	0.5	0.3	0.7	0.7	0.5	0.5	0.3
walls	0.5	0.3	0.5	0.3	0.3	0.5	0.3	0.5	0.3	0.3
working plane	0.2	0.2	0.2	0.2	0.2	0.2	0.2	0.2	0.2	0.2
Room dimensions	Viewed crosswise					Viewed endwise				
x = 2H y = 2H	15.1	16.6	15.6	17.1	17.7	15.1	16.5	15.6	17.1	17.6
3H	17.8	19.1	18.3	19.7	20.3	17.7	19.0	18.2	19.5	20.1
4H	19.2	20.5	19.8	21.0	21.7	19.0	20.3	19.6	20.9	21.5
6H	20.8	22.0	21.4	22.6	23.2	20.5	21.7	21.1	22.3	22.9
8H	21.6	22.8	22.2	23.4	24.1	21.3	22.5	21.9	23.1	23.7
12H	22.6	23.8	23.2	24.4	25.0	22.3	23.4	22.9	24.0	24.7
4H 2H	16.0	17.3	16.6	17.8	18.5	16.0	17.2	16.5	17.8	18.4
3H	18.8	19.9	19.4	20.5	21.2	18.7	19.8	19.3	20.4	21.1
4H	20.4	21.4	21.0	22.1	22.8	20.3	21.3	20.9	21.9	22.6
6H	22.2	23.1	22.8	23.7	24.5	21.9	22.8	22.6	23.5	24.2
8H	23.1	24.0	23.8	24.7	25.4	22.8	23.7	23.5	24.4	25.1
12H	24.2	25.0	24.9	25.7	26.5	23.9	24.7	24.6	25.4	26.2
8H 4H	21.0	21.9	21.7	22.5	23.3	20.9	21.7	21.5	22.4	23.2
6H	23.0	23.8	23.7	24.5	25.3	22.8	23.6	23.5	24.3	25.1
8H	24.2	24.9	24.9	25.6	26.4	24.0	24.6	24.7	25.3	26.1
12H	25.5	26.1	26.3	26.8	27.7	25.2	25.8	25.9	26.5	27.4
12H 4H	21.2	22.0	21.8	22.6	23.4	21.0	21.8	21.7	22.5	23.3
6H	23.3	24.0	24.0	24.7	25.5	23.1	23.8	23.8	24.5	25.3
8H	24.6	25.2	25.3	25.9	26.7	24.3	24.9	25.1	25.7	26.5
Variations with the observer position at spacings:										
S = 1.0H	+ 0.1 / - 0.1					+ 0.1 / - 0.1				
1.5H	+ 0.2 / - 0.3					+ 0.2 / - 0.3				
2.0H	+ 0.3 / - 0.4					+ 0.3 / - 0.4				

 CIE Pub.117, 5714 lm Total Lamp Luminous Flux Correct ( $8\log(F/F_0) = 6.1$ )

C Range: 0 - 360DEG  
 C Interval: 15.0DEG  
 Test Speed: HIGH  
 Temperature:25.3DEG  
 Operators:YZY  
 Test Date:30 November 2022

☐ Range: 0 - 180DEG  
☐ Interval: 1.0DEG  
 Test System:EVERFINE GO-2000A\_V1 SYSTEM V2.0.366  
 Humidity:65.0%  
 Test Distance:6.010m [K=1.0000]  
 Remarks:

### UTILIZATION FACTORS TABLE

Test:U:220.21V I:0.2075A P:44.281W PF:0.9689 Freq:49.99Hz Lamp Flux:5714.16x1 lm		
NAME: Round X2 Series AC-EM	TYPE:Floodlight	WEIGHT:N/A
SPEC.:RND-45-100-240-5K-180-X2-DLG-*--EM	DIM.: N/A	SERIAL No.:N/A
MFR.: Red Sky Lighting	SUR.:N/A	Shielding Angle:N/A

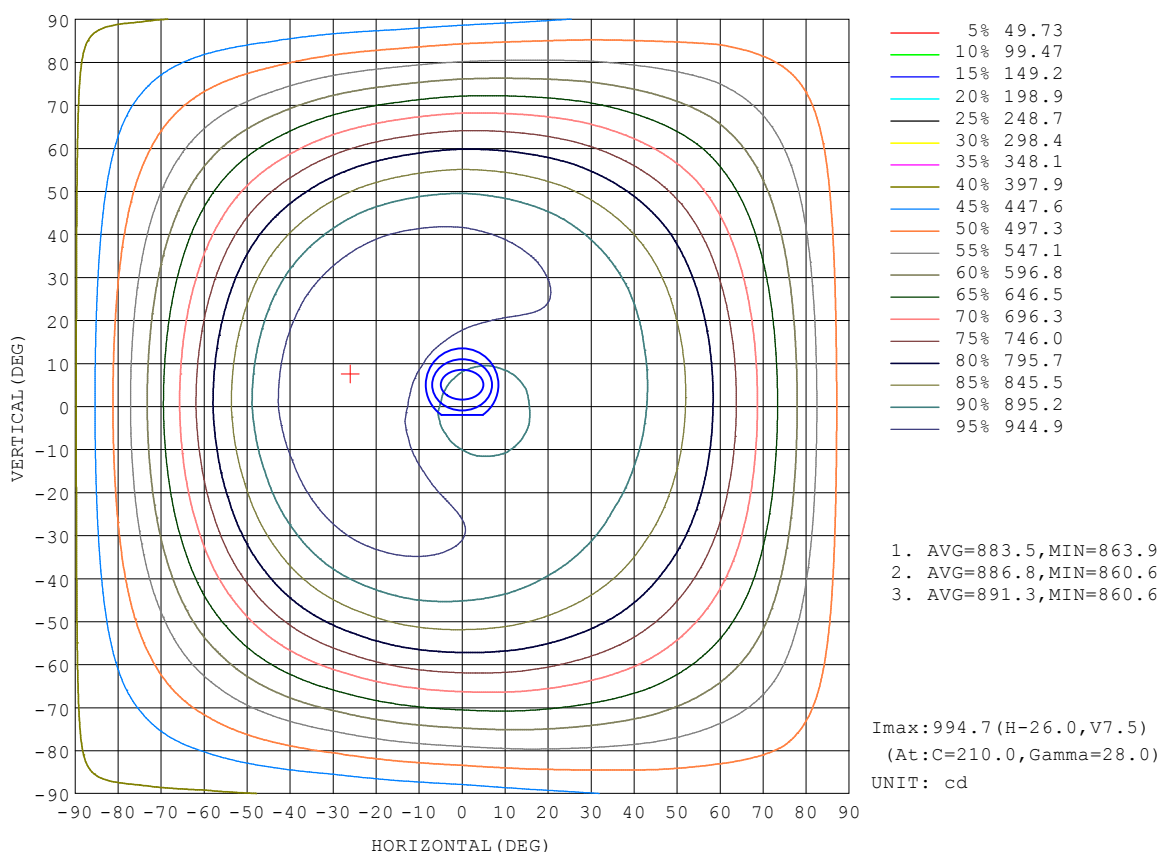
REFLECTANCE										
Ceiling	0.8	0.8	0.8	0.7	0.7	0.7	0.5	0.5	0.5	0
Walls	0.7	0.5	0.3	0.7	0.5	0.3	0.7	0.5	0.3	0
Working plane	0.2	0.2	0.2	0.2	0.2	0.2	0.2	0.2	0.2	0
ROOM INDEX	UTILIZATION FACTORS (PERCENT) $k(RI) \times RCR = 5$									
$k = 0.60$	45	32	25	44	32	24	42	31	24	17
0.80	54	41	32	53	40	32	50	39	31	23
1.00	62	48	39	60	47	39	57	48	38	29
1.25	69	55	46	67	54	46	62	52	44	34
1.50	74	61	52	71	60	51	67	57	49	38
2.00	82	70	61	79	68	59	73	64	57	45
2.50	86	75	67	83	73	65	77	69	62	49
3.00	90	80	72	87	78	70	80	73	66	53
4.00	95	87	79	91	84	77	84	78	73	58
5.00	99	91	84	94	88	82	87	82	77	62
ROOM INDEX	UF (total)									Direct
According to DIN EN 13032-2 2004			Suspended					SHRNOM = 1.25		

C Range: 0 - 360DEG  
 C Interval: 15.0DEG  
 Test Speed: HIGH  
 Temperature:25.3DEG  
 Operators:YZY  
 Test Date:30 November 2022

☐ Range: 0 - 180DEG  
☐ Interval: 1.0DEG  
 Test System:EVERFINE GO-2000A\_V1 SYSTEM V2.0.366  
 Humidity:65.0%  
 Test Distance:6.010m [K=1.0000]  
 Remarks:

### ISOCANDELA DIAGRAM

Test:U:220.21V I:0.2075A P:44.281W PF:0.9689 Freq:49.99Hz Lamp Flux:5714.16x1 lm		
NAME: Round X2 Series AC-EM	TYPE:Floodlight	WEIGHT:N/A
SPEC.:RND-45-100-240-5K-180-X2-DLG-*-EM	DIM.: N/A	SERIAL No.:N/A
MFR.: Red Sky Lighting	SUR.:N/A	Shielding Angle:N/A



C Range: 0 - 360DEG  
 C Interval: 15.0DEG  
 Test Speed: HIGH  
 Temperature:25.3DEG  
 Operators:YZY  
 Test Date:30 November 2022

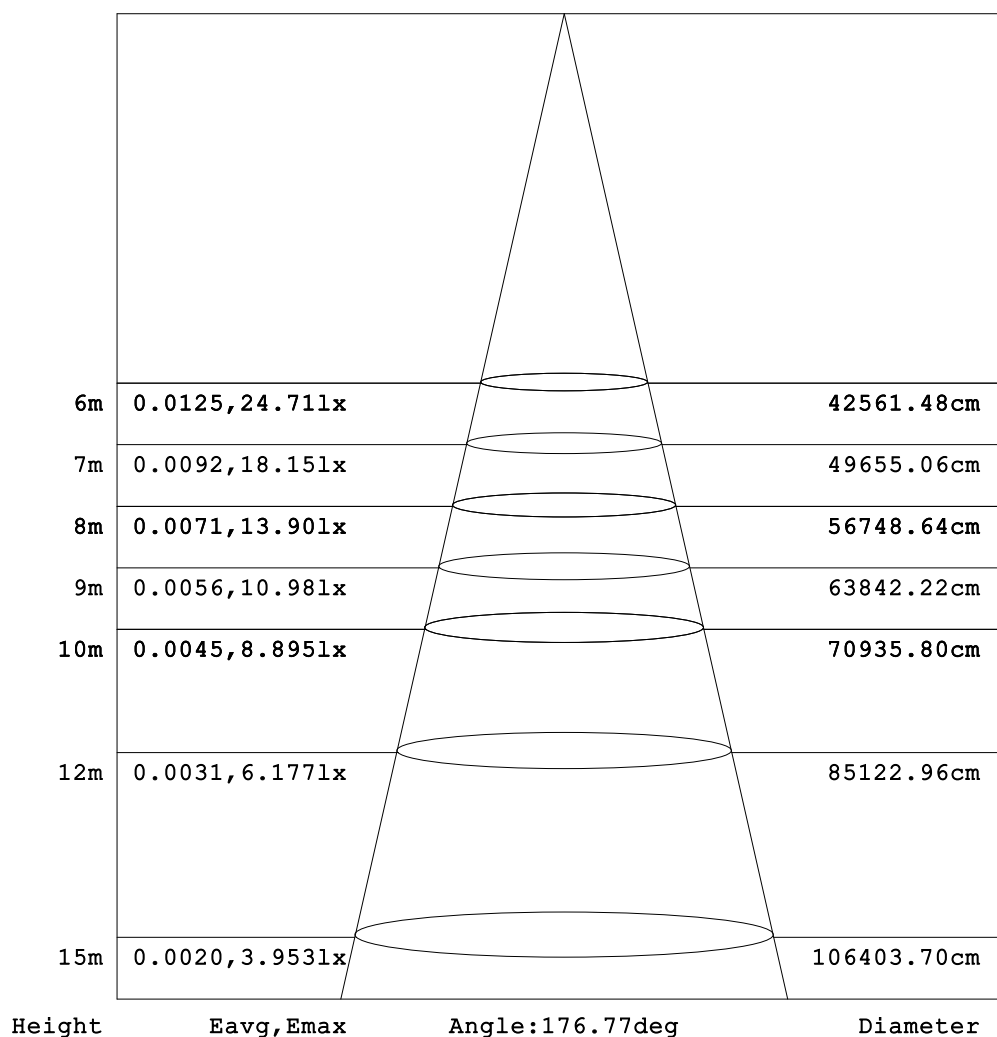
□ Range: 0 - 180DEG  
 □ Interval: 1.0DEG  
 Test System:EVERFINE GO-2000A\_V1 SYSTEM V2.0.366  
 Humidity:65.0%  
 Test Distance:6.010m [K=1.0000]  
 Remarks:



### AAI Figure

Test:U:220.21V I:0.2075A P:44.281W PF:0.9689 Freq:49.99Hz Lamp Flux:5714.16x1 lm		
NAME: Round X2 Series AC-EM	TYPE:Floodlight	WEIGHT:N/A
SPEC.:RND-45-100-240-5K-180-X2-DLG-*-EM	DIM.: N/A	SERIAL No.:N/A
MFR.: Red Sky Lighting	SUR.:N/A	Shielding Angle:N/A

Flux out:4658 lm



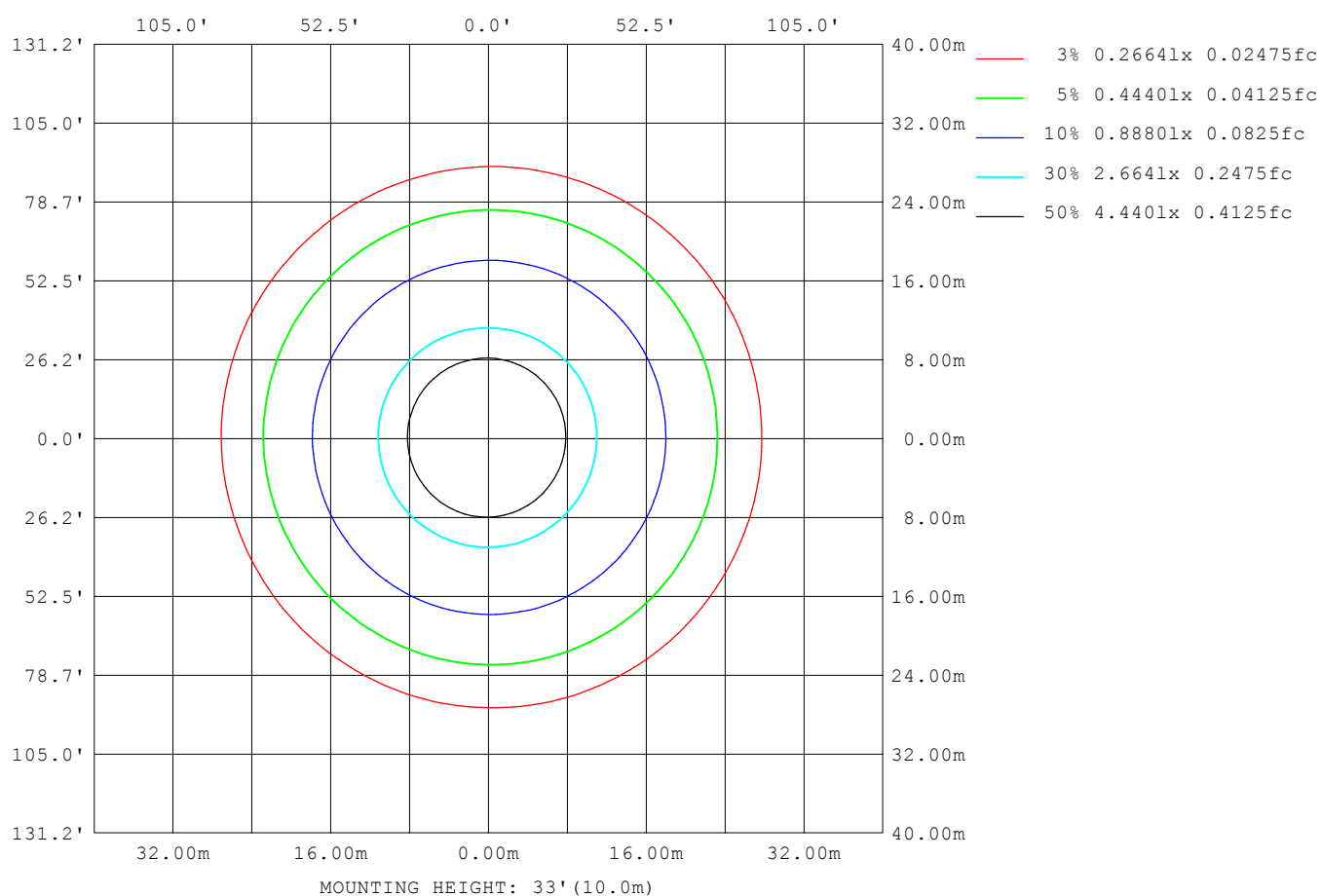
**Note:**The Curves indicate the illuminated area and the average illumination when the luminaire is at different distance.

C Range: 0 - 360DEG  
 C Interval: 15.0DEG  
 Test Speed: HIGH  
 Temperature:25.3DEG  
 Operators:YZY  
 Test Date:30 November 2022

☐ Range: 0 - 180DEG  
☐ Interval: 1.0DEG  
 Test System:EVERFINE GO-2000A\_V1 SYSTEM V2.0.366  
 Humidity:65.0%  
 Test Distance:6.010m [K=1.0000]  
 Remarks:

### ISOLUX DIAGRAM

Test:U:220.21V I:0.2075A P:44.281W PF:0.9689 Freq:49.99Hz Lamp Flux:5714.16x1 lm		
NAME: Round X2 Series AC-EM	TYPE:Floodlight	WEIGHT:N/A
SPEC.:RND-45-100-240-5K-180-X2-DLG-*-EM	DIM.: N/A	SERIAL No.:N/A
MFR.: Red Sky Lighting	SUR.:N/A	Shielding Angle:N/A



C Range: 0 - 360DEG  
 C Interval: 15.0DEG  
 Test Speed: HIGH  
 Temperature:25.3DEG  
 Operators:YZY  
 Test Date:30 November 2022

☐ Range: 0 - 180DEG  
☐ Interval: 1.0DEG  
 Test System:EVERFINE GO-2000A\_V1 SYSTEM V2.0.366  
 Humidity:65.0%  
 Test Distance:6.010m [K=1.0000]  
 Remarks:

### LED Avg.L Report

Test:U:220.21V I:0.2075A P:44.281W PF:0.9689 Freq:49.99Hz Lamp Flux:5714.16x1 lm		
NAME: Round X2 Series AC-EM	TYPE:Floodlight	WEIGHT:N/A
SPEC.:RND-45-100-240-5K-180-X2-DLG-*-EM	DIM.: N/A	SERIAL No.:N/A
MFR.: Red Sky Lighting	SUR.:N/A	Shielding Angle:N/A

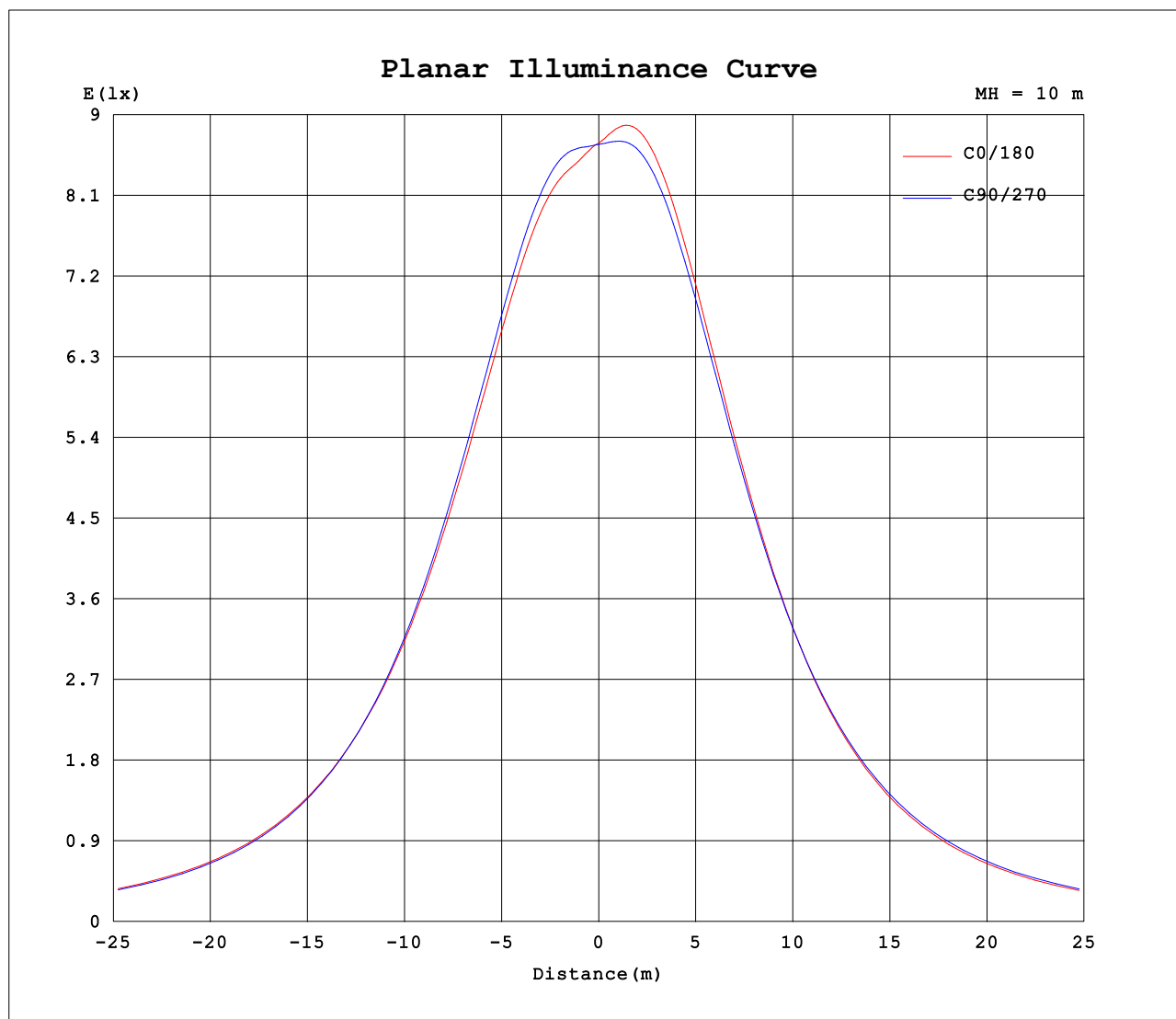
AvgL	cd/m2
L_0~180 (65) av	17005
L_0~180 (75) av	23201
L_0~180 (85) av	55663
L_90~270 (65) av	17112
L_90~270 (75) av	23268
L_90~270 (85) av	55587
L_45 (65) av	17045
L_45 (75) av	23228
L_45 (85) av	55599

Standard: GB/T 29293-2012

C Range: 0 - 360DEG  
 C Interval: 15.0DEG  
 Test Speed: HIGH  
 Temperature:25.3DEG  
 Operators:YZY  
 Test Date:30 November 2022

☐ Range: 0 - 180DEG  
☐ Interval: 1.0DEG  
 Test System:EVERFINE GO-2000A\_V1 SYSTEM V2.0.366  
 Humidity:65.0%  
 Test Distance:6.010m [K=1.0000]  
 Remarks:

## Planar Illuminance Curve



C Range: 0 - 360DEG  
C Interval: 15.0DEG  
Test Speed: HIGH  
Temperature: 25.3DEG  
Operators: YZY  
Test Date: 30 November 2022

☐ Range: 0 - 180DEG  
☐ Interval: 1.0DEG  
Test System: EVERFINE GO-2000A\_V1 SYSTEM V2.0.366  
Humidity: 65.0%  
Test Distance: 6.010m [K=1.0000]  
Remarks:

**LUMINOUS DISTRIBUTION INTENSITY DATA**

Test:U:220.21V I:0.2075A P:44.281W PF:0.9689 Freq:49.99Hz Lamp Flux:5714.16x1 lm		
NAME: Round X2 Series AC-EM	TYPE:Floodlight	WEIGHT:N/A
SPEC.:RND-45-100-240-5K-180-X2-DLG-*-EM	DIM.: N/A	SERIAL No.:N/A
MFR.: Red Sky Lighting	SUR.:N/A	Shielding Angle:N/A

Table--1

UNIT: cd

C (DEG) □ (DEG)	0	15	30	45	60	75	90	105	120	135	150	165	180	195	210	225	240	255	270
0	867	867	867	867	867	867	867	867	867	867	867	867	867	867	867	867	867	867	867
5	860	860	861	862	866	869	874	878	882	886	889	891	893	894	893	891	888	885	880
10	872	871	873	876	881	887	895	902	909	915	921	924	927	928	927	924	919	914	906
15	892	890	892	895	901	908	917	925	934	942	949	953	957	958	957	954	948	941	933
20	908	906	907	910	917	924	934	943	953	962	969	974	979	980	979	976	970	963	954
25	918	915	916	920	926	934	944	954	964	972	980	985	990	992	991	988	983	976	967
30	921	918	918	922	928	936	946	955	964	973	979	985	991	992	993	990	986	979	972
35	916	913	913	917	923	930	939	947	955	963	969	974	981	983	984	981	978	972	966
40	905	901	901	904	909	916	922	930	936	942	947	953	960	962	964	962	960	956	952
45	884	881	880	883	887	892	897	902	906	911	914	920	927	929	932	931	932	929	927
50	857	853	852	854	856	860	861	864	865	869	870	875	883	885	889	889	891	890	891
55	822	819	816	817	818	819	817	818	816	818	818	822	829	831	836	837	842	843	846
60	780	777	774	774	772	771	767	765	760	761	759	762	769	771	776	778	785	787	793
65	733	731	727	725	722	718	712	707	701	699	696	699	704	706	712	715	722	727	735
70	682	680	676	673	667	662	653	647	639	636	632	634	638	640	646	650	658	664	673
75	628	627	622	618	611	604	594	587	578	574	569	570	573	575	580	584	593	600	610
80	573	572	567	563	555	547	536	528	518	514	509	508	511	512	517	522	531	538	548
85	519	519	513	508	500	491	480	472	460	455	450	449	451	452	458	462	471	478	489
90	466	466	461	455	446	437	425	416	405	399	394	393	394	395	400	404	414	421	432
95	414	414	408	403	393	383	371	363	352	347	341	340	341	342	346	350	359	366	376
100	362	362	357	351	342	333	321	311	300	294	287	285	285	284	289	293	301	310	322
105	305	305	300	295	285	276	264	256	245	240	233	231	231	230	234	238	246	253	264
110	249	249	245	240	231	223	213	206	197	191	186	184	184	183	186	189	196	202	212
115	199	199	195	191	184	177	168	162	154	149	145	143	143	142	145	148	154	158	167
120	154	155	152	148	142	136	129	122	117	112	108	107	106	106	108	111	115	120	126
125	115	115	113	110	105	100	94.6	89.6	84.5	81.3	78.8	77.9	77.6	78.0	79.6	81.8	83.9	88.3	92.9
130	83.9	83.4	82.4	80.1	76.6	72.7	68.7	64.6	60.6	59.7	57.4	57.0	56.8	56.7	58.4	59.8	61.1	63.7	67.6
135	61.0	61.1	59.8	58.4	54.9	51.7	47.7	44.8	41.8	41.5	39.8	39.4	39.3	39.2	40.6	41.6	41.7	43.1	46.2
140	42.2	42.3	41.3	40.2	37.5	34.5	31.2	29.2	27.0	27.1	25.8	25.5	25.4	25.5	26.5	27.3	26.9	26.5	28.5
145	27.0	27.0	26.4	25.7	24.1	21.4	19.8	18.1	18.8	18.9	18.7	18.7	18.7	18.8	19.2	19.6	19.5	17.4	17.5
150	19.9	19.8	19.6	19.2	18.5	17.5	11.4	11.0	13.9	13.0	12.1	11.8	11.5	11.5	12.3	12.9	14.0	12.9	13.8
155	12.0	12.1	11.8	11.4	10.4	9.53	6.05	5.96	6.48	5.95	5.48	5.36	5.26	5.23	5.58	5.89	6.64	6.11	5.40
160	5.26	5.34	5.13	4.95	4.58	4.28	4.16	4.22	4.17	4.14	4.09	4.10	4.10	4.03	3.99	4.01	4.07	4.14	4.12
165	4.21	4.23	4.27	4.25	4.30	4.42	4.51	4.59	4.62	4.53	4.45	4.41	4.48	4.41	4.42	4.49	4.59	4.60	4.54
170	4.61	4.67	4.70	4.72	4.79	4.83	4.88	5.01	5.02	4.91	4.80	4.82	5.05	4.90	4.82	4.92	5.03	5.06	5.00
175	5.16	5.14	5.14	5.15	5.17	5.16	5.20	5.29	5.29	5.20	5.09	5.31	5.54	5.46	5.27	5.23	5.33	5.34	5.28
180	6.23	6.24	6.16	6.02	6.01	6.00	5.99	5.98	5.97	5.96	6.11	6.26	6.24	6.24	6.16	6.02	6.01	6.00	5.99

C Range: 0 - 360DEG  
C Interval: 15.0DEG  
Test Speed: HIGH  
Temperature:25.3DEG  
Operators:YZY  
Test Date:30 November 2022

□ Range: 0 - 180DEG  
□ Interval: 1.0DEG  
Test System:EVERFINE GO-2000A\_V1 SYSTEM V2.0.366  
Humidity:65.0%  
Test Distance:6.010m [K=1.0000]  
Remarks:

**LUMINOUS DISTRIBUTION INTENSITY DATA**

Test:U:220.21V I:0.2075A P:44.281W PF:0.9689 Freq:49.99Hz Lamp Flux:5714.16x1 lm		
NAME: Round X2 Series AC-EM	TYPE:Floodlight	WEIGHT:N/A
SPEC.:RND-45-100-240-5K-180-X2-DLG-*-EM	DIM.: N/A	SERIAL No.:N/A
MFR.: Red Sky Lighting	SUR.:N/A	Shielding Angle:N/A

Table--2

UNIT: cd

C (DEG) □ (DEG)	285	300	315	330	345														
0	867	867	867	867	867														
5	876	871	868	864	862														
10	900	891	885	878	875														
15	925	915	908	900	895														
20	945	935	926	918	912														
25	958	948	939	930	923														
30	963	953	944	935	927														
35	959	950	941	932	924														
40	945	938	929	921	913														
45	922	916	909	901	893														
50	889	885	879	873	865														
55	846	845	840	836	830														
60	795	797	794	792	787														
65	739	742	742	742	738														
70	679	685	686	689	686														
75	617	625	628	633	631														
80	556	565	570	576	576														
85	498	507	513	520	521														
90	441	451	458	465	467														
95	385	396	403	412	414														
100	332	343	351	359	362														
105	272	284	292	301	304														
110	219	229	237	245	247														
115	173	182	188	195	197														
120	133	140	145	151	153														
125	97.9	103	108	111	114														
130	71.1	74.9	78.7	81.1	82.9														
135	49.1	53.3	56.7	59.0	60.2														
140	30.5	35.3	38.6	40.6	41.5														
145	18.3	21.6	22.0	25.9	26.4														
150	15.8	18.5	18.4	19.4	19.6														
155	9.09	10.1	10.8	11.0	11.7														
160	4.14	4.42	4.68	4.69	5.08														
165	4.41	4.27	4.19	4.19	4.16														
170	4.89	4.81	4.71	4.68	4.63														
175	5.21	5.18	5.17	5.14	4.99														
180	5.97	5.96	5.96	6.11	6.26														

C Range: 0 - 360DEG  
 C Interval: 15.0DEG  
 Test Speed: HIGH  
 Temperature:25.3DEG  
 Operators:YZY  
 Test Date:30 November 2022

□ Range: 0 - 180DEG  
 □ Interval: 1.0DEG  
 Test System:EVERFINE GO-2000A\_V1 SYSTEM V2.0.366  
 Humidity:65.0%  
 Test Distance:6.010m [K=1.0000]  
 Remarks: