

HAZARDOUS LOCATION LIGHTING BASICS

Atmosphere Groups

Substance	Hazard Class	Division Groups	Zone Groups
Acetylene	Class I Flammable Gases	Group A	IIC
Hydrogen		Group B	IIC
Ethylene		Group C	IIB
Propane		Group D	IIA
Methane		Group D	IIA ²
Combustible Metal Dusts	Class II Combustible Dusts	Group E ¹	IIIC ³
Combustible Carbonaceous Dust		Group F	IIIB ³
Combustible Dusts not in Group E or F (Flour, Grain, Wood, Plastics, Chemicals)		Group G	IIIB ³
Combustible Fibers and Flyings	Class III Fibers and Flyings	Not Applicable	IIIA ³

Note 1: Group E is applicable to Class II, Division 1 only.
Note 2: Methane is a Group IIA Gas for non-mining applications.
Note 3: Group IIIA, IIIB and IIIC have not been adopted by the Canadian Electrical Code.

Temperature Classification

Max. Surface Temperatures	NEC®500 CEC®	NEC®500/IEC-Group II
450(842)	T1	T1
300(572)	T2	
280(536)	T2A	
260(500)	T2B	T2
230(446)	T2C	
215(419)	T2D	
200(392)	T3	
180(256)	T3A	T3
165(329)	T3B	
160(320)	T3C	
135(275)	T4	T4
120(248)	T4A	
100(212)	T5	
85(185)	T6	T6

Classification of Divisions and Zones

Hazard Level	Division Scheme	Zone Scheme	Definitions
Continuous Hazard	Division 1	Zone 0 / Zone 20	A place in which an explosive atmosphere is continually present
Intermittent Hazard		Zone 1 / Zone 21	A place in which an explosive atmosphere is likely to occur in normal operation
Hazard Under Abnormal Conditions	Division 2	Zone 2 / Zone 22	A place in which an explosive atmosphere is not likely to occur in normal operation, but may occur for short periods

IP Codes

1st No.	Solid Objects
0	No protection
1	Objects greater than 50mm
2	Objects greater than 12.5mm
3	Objects greater than 2.5mm
4	Objects greater than 1mm
5	Dust protected
6	Dust proof
2nd No.	Liquids
0	No protection
1	Vertically dripping
2	Dripping up to 15°
3	Limited spraying
4	Splashing from all directions
5	Hosing jets from all directions
6	Strong hosing jets from all directions
7	Temporary immersion
8	Continuous immersion
9	Steam-jet cleaning

IK Ratings

IK Code	Level of Protection Achieved
IK00	Not protected
IK01	Protected against 0.14 joules impact
IK02	Protected against 0.2 joules impact
IK03	Protected against 0.35 joules impact
IK04	Protected against 0.5 joules impact
IK05	Protected against 0.7 joules impact
IK06	Protected against 1 joules impact
IK07	Protected against 2 joules impact
IK08	Protected against 5 joules impact
IK09	Protected against 10 joules impact
IK10	Protected against 20 joules impact
IK11	Protected against 40 joules impact



HARSH & HAZARDOUS (UL)

BLOCK-MINI SERIES H1

For low wattage explosion proof applications
Class I Division 1, Class I Division 2
Class II Division 1, Class II Division 2
Class III



Wattage: 21W/40W/50W/60W
Lumens (Lm): 4,220/6,499/7,179/8,514
Warranty: LEDs: 10 Years, Driver: 7 Years

BLOCK SERIES H1

For explosion proof environments
Class I Division 1, Class I Division 2
Class II Division 2
Class III



Wattage: 80W/100W/120W/150W
Lumens (Lm): 12,320/14,162/17,680/21,227
Warranty: LEDs: 10 Years, Driver: 7 Years

LINEAR TUFF SERIES

For explosion proof environments with low ceiling applications
Class I Division 1, Class I Division 2



Wattage: 30W/40W/60W/80W
Lumens (Lm): 4,608/6,192/8,670/10,810
Warranty: LEDs: 10 Years, Driver: 7 Years

LINEAR SERIES

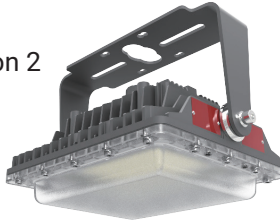
For hazardous environments with low ceiling applications
Class I Division 2, Class II Division 1
Class II Division 2, Class III



Wattage: 30W/40W/60W/80W
Lumens (Lm): 4,426/5,795/9,185/12,026
Warranty: LEDs: 10 Years, Driver: 7 Years

BLOCK-MINI SERIES H2

For harsh and hazardous environments
Class I Division 2,
Class II Division 1, Class II Division 2
Class III



Wattage: 21W/40W/50W/60W
Lumens (Lm): 4,220/6,499/7,179/8,514
Warranty: LEDs: 10 Years, Driver: 7 Years

BLOCK SERIES H2

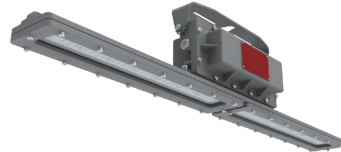
For harsh and hazardous environments
Class I Division 2
Class II Division 2
Class III



Wattage: 80W/100W/120W/150W
Lumens (Lm): 12,320/14,162/17,680/21,227
Warranty: LEDs: 10 Years, Driver: 7 Years

LINEAR TUFF EMERGENCY SERIES

For explosion proof environments with low ceiling applications
Class I Division 1



Wattage: 80W
Lumens (Lm): 10,057
Warranty: LEDs: 10 Years, Driver: 7 Years, Battery: 5 Years

LINEAR EMERGENCY SERIES

For hazardous environments with low ceiling applications
Class I Division 2, Class II Division 1
Class II Division 2, Class III



Wattage: 40W/80W
Lumens (Lm): 6,183/11,486
Warranty: LEDs: 10 Years, Driver: 7 Years, Battery: 3 Years

MODULAR HOT SERIES

For indoor high bay for high temperature locations
Operating Temperature:
-40°F to + 158°F (-40°C to + 70°C) - Glass
-40°F to + 149°F (-40°C to + 65°C) - PC



Wattage: 200W/400W/600W/800W
Lumens (Lm): 30,521/57,516/87,595/114,598
Warranty: 5 Years

HIGH BAY HOT SERIES

For harsh, extreme heat environments
Operating Temperature:
-40°F to + 176°F (-40°C to + 80°C)

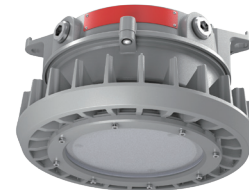


Wattage: 150W
Lumens (Lm): 22,158 (110°), 19,970 (60°)
Warranty: Standard: 3 Years; Extended: 5 Years

HARSH & HAZARDOUS (UL)

ROUND SERIES

For harsh and hazardous environments
Class I Division 2, Class II Division 1
Class II Division 2, Class III



Wattage: 35W/40W/45W/55W/60W/65W
Lumens (Lm): 5,295/6,366/6,751/8,789/10,154/10,758
Warranty: LEDs: 10 Years, Driver: 7 Years

MODULAR MAX SERIES

For harsh and hazardous environments
Class I Division 2, Class II Division 1,
Class II Division 2, Class III



Wattage: 90W/120W/190W/260W
310W/380W/440W
Lumens (Lm): 16,467/21,037/32,082/40,632
50,554/62,902/72,190
Warranty: Standard: 7 Years, Extended: 10 Years

ROUND-MAX SERIES

For harsh and hazardous environments
Class I Division 2, Class II Division 1
Class II Division 2, Class III



Wattage: 80W/120W/150W/200W
Lumens (Lm): 12,720/19,320/23,850/29,600
Warranty: LEDs: 10 Years, Driver: 7 Years

HARSH (UL)

CRANE MASTER SERIES UL

For Heavy Cranes and Harsh-duty applications
UL1598
UL1598A



Wattage: 300W
Lumens (Lm): 42,211
Warranty: 5 Years

SCAN FOR LATEST PRODUCT INFO



Contact us:
+1 (262) 456-5002
contact@redskyllighting.com
www.redskyllighting.com