

HAZARDOUS LOCATION LIGHTING BASICS

Atmosphere Groups

Substance	Hazard Class	Division Groups	Zone Groups
Acetylene	Class I Flammable Gases	Group A	IIC
Hydrogen		Group B	IIC
Ethylene		Group C	IIB
Propane		Group D	IIA
Methane		Group D	IIA ²
Combustible Metal Dusts	Class II Combustible Dusts	Group E ¹	IIIC ³
Combustible Carbonaceous Dust		Group F	IIIB ³
Combustible Dusts not in Group E or F (Flour, Grain, Wood, Plastics, Chemicals)		Group G	IIIB ³
Combustible Fibers and Flyings	Class III Fibers and Flyings	Not Applicable	IIIA ³

Note 1: Group E is applicable to Class II, Division 1 only.
Note 2: Methane is a Group IIA Gas for non-mining applications.
Note 3: Group IIIA, IIIB and IIIC have not been adopted by the Canadian Electrical Code.

Temperature Classification

Max. Surface Temperatures	NEC®500 CEC®	NEC®500/IEC-Group II
450(842)	T1	T1
300(572)	T2	
280(536)	T2A	
260(500)	T2B	T2
230(446)	T2C	
215(419)	T2D	
200(392)	T3	
180(256)	T3A	T3
165(329)	T3B	
160(320)	T3C	
135(275)	T4	T4
120(248)	T4A	
100(212)	T5	
85(185)	T6	T6

Classification of Divisions and Zones

Hazard Level	Division Scheme	Zone Scheme	Definitions
Continuous Hazard	Division 1	Zone 0 / Zone 20	A place in which an explosive atmosphere is continually present
Intermittent Hazard		Zone 1 / Zone 21	A place in which an explosive atmosphere is likely to occur in normal operation
Hazard Under Abnormal Conditions	Division 2	Zone 2 / Zone 22	A place in which an explosive atmosphere is not likely to occur in normal operation, but may occur for short periods

IP Codes

1st No.	Solid Objects
0	No protection
1	Objects greater than 50mm
2	Objects greater than 12.5mm
3	Objects greater than 2.5mm
4	Objects greater than 1mm
5	Dust protected
6	Dust proof
2nd No.	Liquids
0	No protection
1	Vertically dripping
2	Dripping up to 15°
3	Limited spraying
4	Splashing from all directions
5	Hosing jets from all directions
6	Strong hosing jets from all directions
7	Temporary immersion
8	Continuous immersion
9	Steam-jet cleaning

IK Ratings

IK Code	Level of Protection Achieved
IK00	Not protected
IK01	Protected against 0.14 joules impact
IK02	Protected against 0.2 joules impact
IK03	Protected against 0.35 joules impact
IK04	Protected against 0.5 joules impact
IK05	Protected against 0.7 joules impact
IK06	Protected against 1 joules impact
IK07	Protected against 2 joules impact
IK08	Protected against 5 joules impact
IK09	Protected against 10 joules impact
IK10	Protected against 20 joules impact



RED SKY
SERIOUSLY SAFE LIGHTS™

HARSH & HAZARDOUS (ATEX & IECEx & UKEX)

BLOCK MAX SERIES

ATEX & UKEX
II 2G Ex eb mb IIC T5/T4 Gb
II 2D Ex tb IIIC T85°C Db
IECEX
Ex eb mb IIC T5/T4 Gb
Ex tb IIIC T85°C Db
UKCA EMC/LVD
Zone 1&2
Zone 21&22
IP66/67
IK08
IEC60068-2-6 3g



Wattage: 40W(EM)/90W(EM)/115W/145W/180W
Lumens (Lm): 7,162/15,523/20,741/25,800/31,164
Lumens (EM): 5,000Lm@90mins/2,500Lm@180mins
Warranty: Driver: 5 Years, Battery: 1 Year

BLOCK SERIES X1

ATEX
II 2G Ex db IIB T5 Gb
II 2D Ex tb IIIC (T95°C Max) Db, IP66
CE EMC/LVD
Zone 1&2
Zone 21&22
IP66
IK08



Wattage: 20W/40W/60W/80W/100W/120W/150W
Lumens (Lm): 2,399/4,260/5,944/8,815/10,733/15,807/18,863
Warranty: 5 Years

BLOCK SERIES C1

IECEX
Ex db IIB T6 Gb
Ex tb IIIC T85°C Db
UKEX
II 2G Ex db IIB T6 Gb
II 2D Ex tb IIIC T85°C Db
CE EMC/LVD
Zone 1&2
Zone 21&22
IP66
IK09



Wattage: 80W/100W/150W
Lumens (Lm): 10,288/12,274/18,646
Warranty: 5 Years

LINEAR LOW PROFILE SERIES

(Battery option available)

ATEX & UKEX
II 2G Ex db eb mb IIC T6/T5 Gb
II 2D Ex tb IIIC T80°C Db
IECEX
Ex db eb mb IIC T6/T5 Gb
Ex tb IIIC T80°C Db
CE EMC/LVD
ROHS
EN62471
Zone 1&2
Zone 21&22
IP66
IK10



Wattage: 20W/40W/50W/60W/80W/100W
Lumens (Lm): 2,208/4,164/6,067/6,448/7,943/9,399
Warranty: Fixture: 5 Years. Battery: 1 Year

ROUND SERIES X2 AC & EM

ATEX & UKEX
II 3G Ex ec nC nR IIC T4 Gc;
II 2D Ex tb IIIC T110°C Db (65W/75W)
II 3G Ex ec nC nR IIC T6 Gc;
II 2D Ex tb IIIC T85°C Db (25W/45W)
IECEX
Ex ec nC nR IIC T4 Gc;
Ex tb IIIC T110°C Db (65W/75W)
Ex ec nC nR IIC T6 Gc;
Ex tb IIIC T85°C Db (25W/45W)
Zone 2,21
IP66
IK08



Wattage: 25W/45W/65W/75W
Lumens (Lm): 4,036/7,129/10,405/11,758
Lumens (EM): 1,800
Warranty: Driver: 5 Years, Battery: 1 Year

ROUND SERIES X2 DC

ATEX & UKEX
II 3G Ex ec nC nR IIC T4 Gc;
II 2D Ex tb IIIC T110°C Db (65W)
II 3G Ex ec nC nR IIC T6 Gc;
II 2D Ex tb IIIC T85°C Db (25W/45W)
IECEX
Ex ec nC nR IIC T4 Gc;
Ex tb IIIC T110°C Db (65W)
Ex ec nC nR IIC T6 Gc;
Ex tb IIIC T85°C Db (25W/45W)
Zone 2,21
IP66
IK08



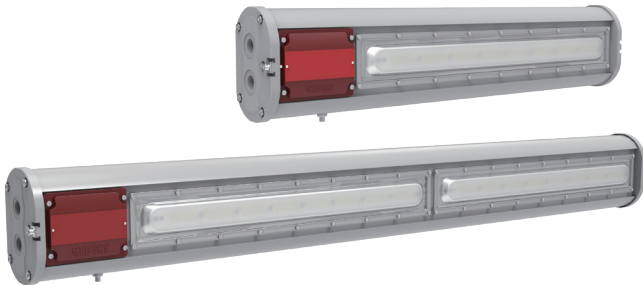
Wattage: 25W/45W/65W
Lumens (Lm): 4,096/7,067/10,209
Warranty: 3 Years

HARSH (CE & UKCA)

LINEAR HARSH SERIES

(Battery option available)

CE EMC/LVD
UKCA
ROHS
IP66
IK08 (PC)



Wattage: 25W/50W/75W/100W
Lumens (Lm): 3,750/7,500/11,250/15,000
Warranty: 5 Years

CRANE MASTER SERIES

CE EMC/LVD
UKCA
ROHS
IP67
IK08
IEC60068-2-6 5g



Wattage: 150W/300W/420W/560W
Lumens (Lm): 20,439/42,425/58,852/79,230
Warranty: 5 Years

SCAN FOR LATEST PRODUCT INFO



Contact us:
+1 (262) 456-5002
contact@redskyllighting.com
www.redskyllighting.com