

SLIP-FIT JUNCTION BOX

ENGINEERED FOR HARSH AND HAZARDOUS ENVIRONMENTS

Accommodated
Products:

**RND2/BLM H2/LNR2/
BLK2 H2/MDX**

RED SKY
SERIOUSLY SAFE LIGHTS™



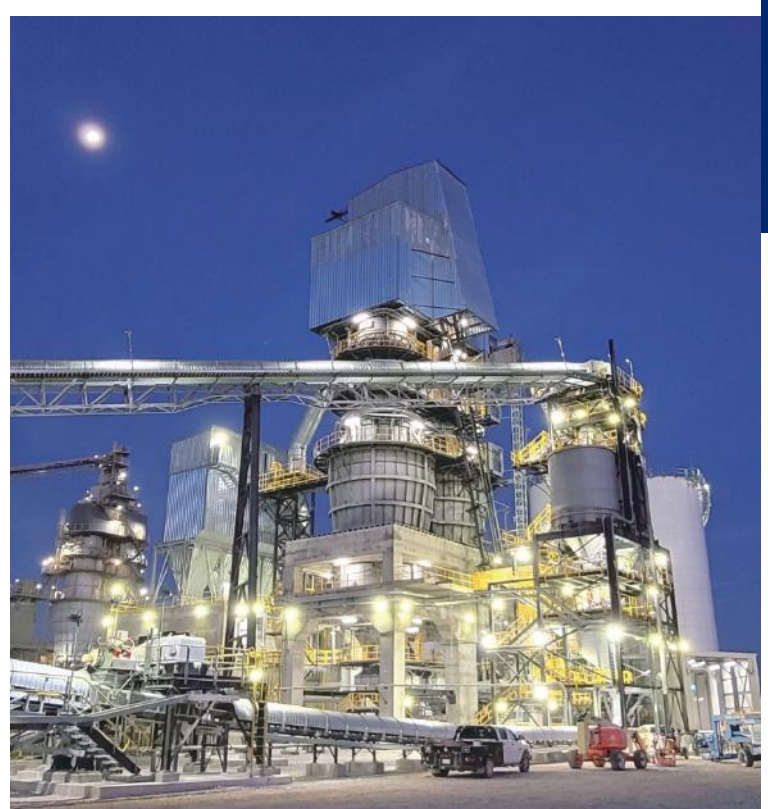
PIONEERING INDUSTRIAL ILLUMINATION FOR HARSH & HAZARDOUS ENVIRONMENTS

A leading manufacturer of premium LED lights designed for demanding work environments.

Headquartered in California, with products assembled in the USA.

Serving global clients across four continents, specializing in metal processing, oil & gas, marine, and manufacturing industries.

Renowned for our commitment to quality, dependability, client care, and uncompromising safety standards.



WHY CHOOSE RED SKY

❧ SERIOUSLY SAFE LIGHTS

- Rigorously tested in our advanced professional labs
- Exceeding industry certifications and safety standards
- Crafted from the highest-grade components for superior durability

❧ TOP-NOTCH SERVICES

- A team of experts providing seamless support
- Energy audit and lighting simulation services
- Hassle-free return policy and management

❧ FAST DELIVERY

- Most orders delivered within 14 days
- Same-day shipping for in-stock products
- Real-time order tracking for complete transparency

❧ SUSTAINABLE SOLUTIONS

- High-efficiency LEDs for significant energy savings
- Thoughtfully designed products for optimal performance and sustainability
- Recyclable materials used in both products and packaging

SLIP-FIT JUNCTION BOX

The Junction Box is a multi-piece assembly featuring a copper-free, cast-aluminum housing, front cover, and cable gland. The design accommodates both stanchion installation and other mounting options. It is compatible with 2" (2 3/8" OD) and 1.5" (1.9" OD) poles, both NPT-threaded and non-threaded.

FEATURES



- Weather-resistant finish suitable for wet locations and marine environments
- WAGO 211 lever connectors (5-pole, UL/CSA, 20-10 AWG) for easy, hassle-free wiring
- Wiring access cover with captive screws and a rear hub featuring NPT 1/2" threads for daisy-chain wiring
- Optional C1D2 Photocell Sensor built-in
- Ambient temperature range: -45°C to +65°C (-49°F to 149°F)
- Shock and vibration-resistant design

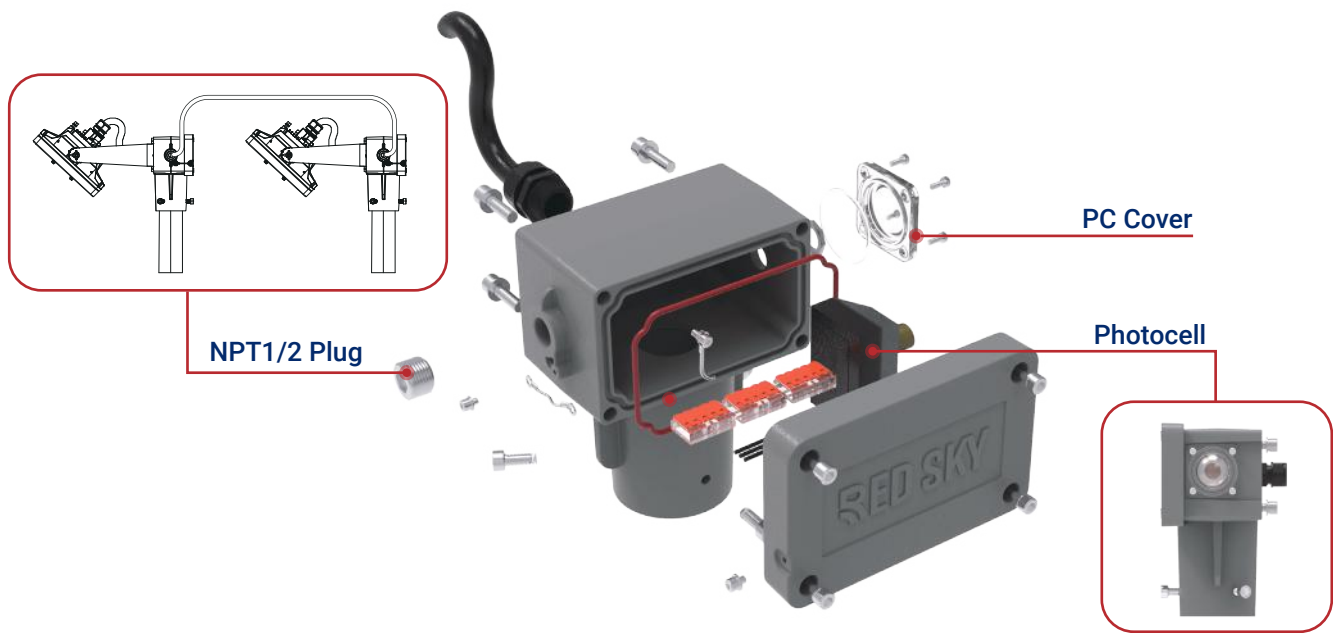
RATINGS

Class I Division 2, Groups A, B, C, D
UL 1598 Wet Locations
UL 1598A Marine Outside Type (Salt Water)
NEMA 3R
IP66
IK10
Salt Spray 720 hrs (ISO 9227)

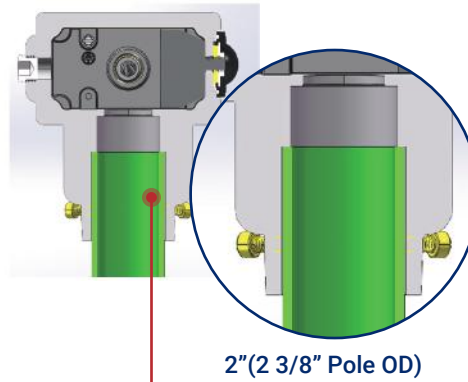
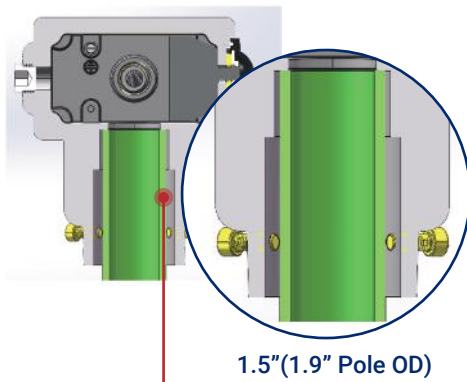
CERTIFICATIONS

UL844
UL1598
UL1598A
CSA C22.2 NO. 250.0
CSA C22.2 No. 137

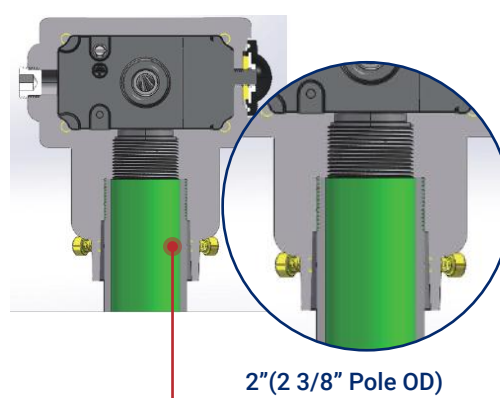
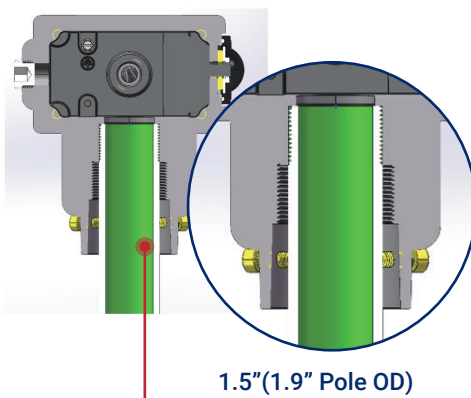
PRODUCT VIEWS



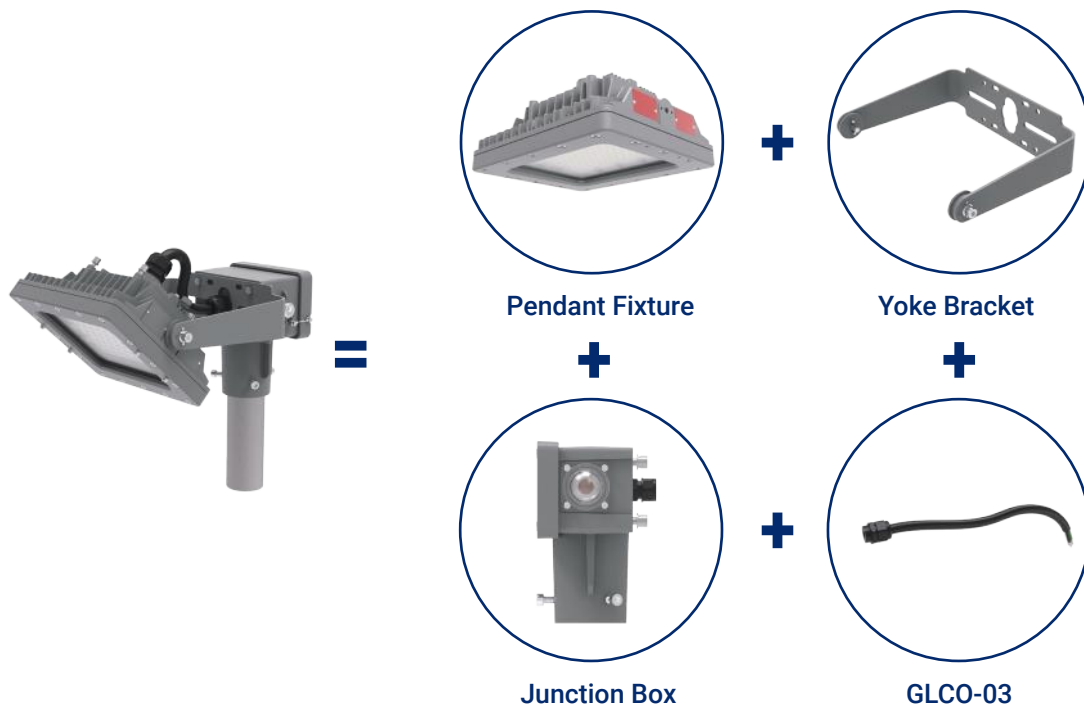
Non-threaded Slip-Fit Junction box



NPT-threaded Slip-Fit Junction box

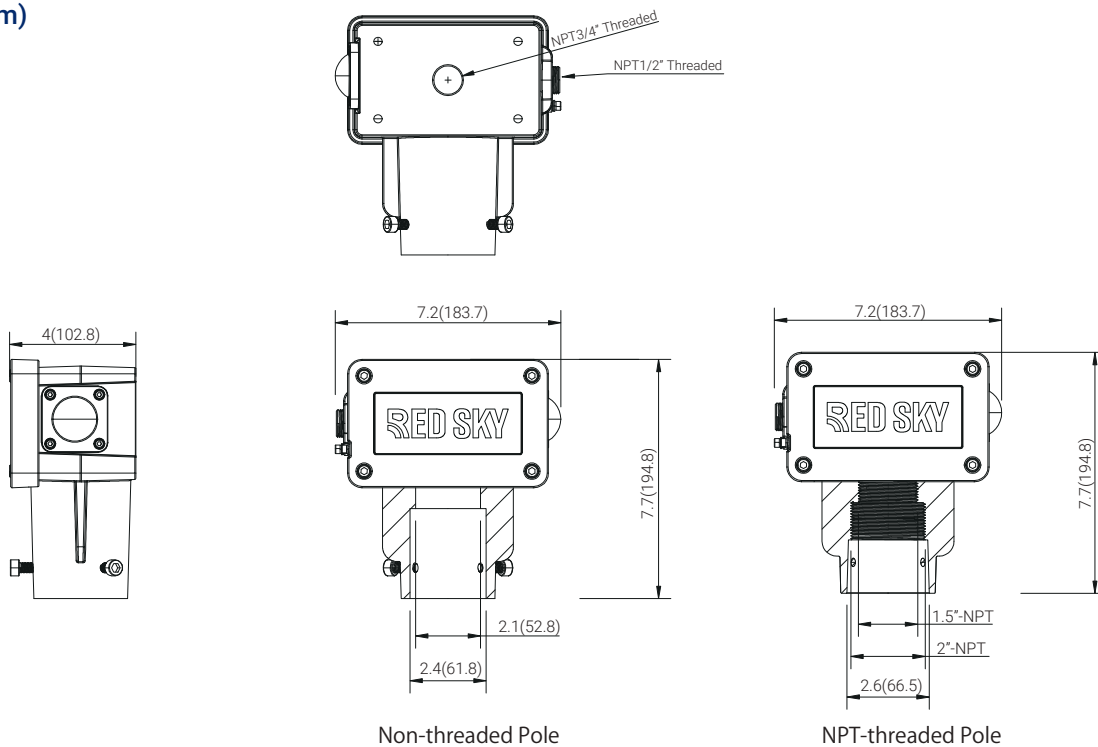


INSTALLATION EXAMPLE



DIMENSIONS

unit: in (mm)

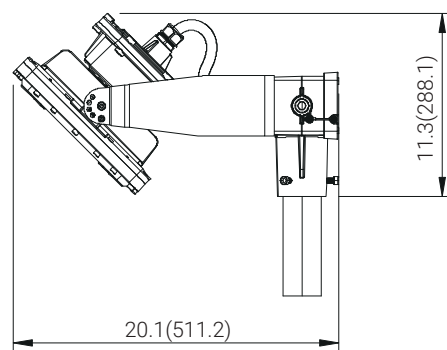
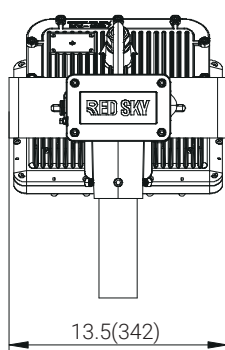


DIMENSIONS

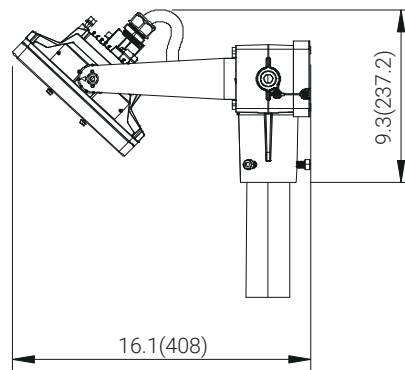
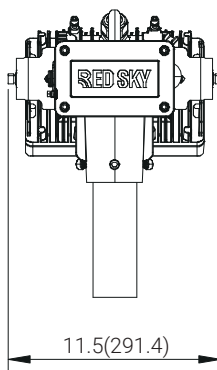
unit: in (mm)



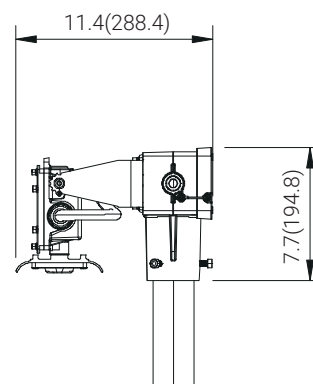
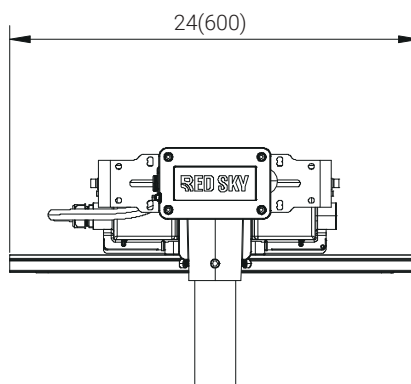
BLK2 H2
EPA(FT2): 1.881



BLM H2
EPA(FT2): 1.134

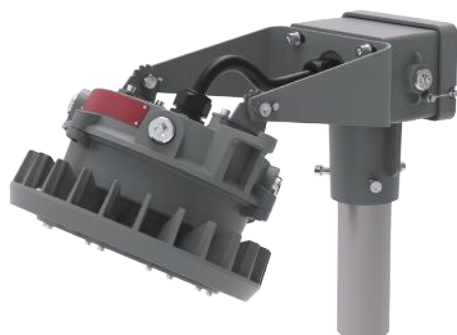


LNR2
EPA(FT2): 1.556(2ft), 2.074(4ft)

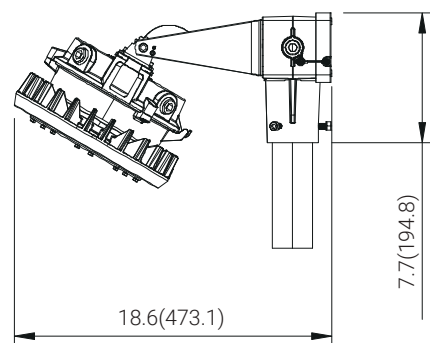
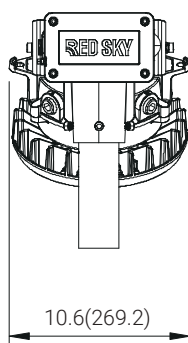


DIMENSIONS

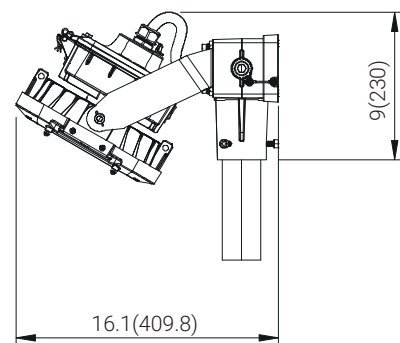
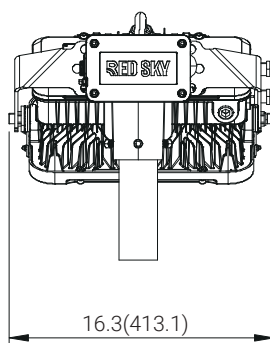
unit: in (mm)



RND2
EPA(FT2): 1.321



MDX
EPA(FT2): 1.888(Single), 2.999(Dual)



ORDERING INFORMATION

| Part Number | Description | MPN Code |
|--------------|--|-----------|
| JB01 | 1.5" (1.9" OD) and 2"(2 3/8" OD) NPT-threaded Slip-Fit Junction box | 309050379 |
| JB02-P | 1.5" (1.9" OD) and 2"(2 3/8" OD) NPT-threaded Slip-Fit Junction box + Sensor (120V) | 309050380 |
| JB03-P | 1.5" (1.9" OD) and 2"(2 3/8" OD) NPT-threaded Slip-Fit Junction box + Sensor (208-277V) | 309050381 |
| JB04 | 1.5" (1.9" OD) and 2"(2 3/8" OD) Non-threaded Slip-Fit Junction box | 309050382 |
| JB05-P | 1.5" (1.9" OD) and 2"(2 3/8" OD) Non-threaded Slip-Fit Junction box + Sensor (120V) | 309050383 |
| JB06-P | 1.5" (1.9" OD) and 2"(2 3/8" OD) Non-threaded Slip-Fit Junction box + Sensor (208-277V) | 309050384 |
| JB001-A-01 | BLM Custom Bracket Assembly | 309050387 |
| JB004-A-01 | LNR2 Custom Bracket Assembly | 309050389 |
| JB002-A-01 | RND2 Custom Bracket Assembly | 309050390 |
| JB013-A-01 | BLK2 Custom Bracket Assembly | 309050388 |
| MDX-A YOKE S | 45°Angled YOKE, 0-90° adjustable, SUS304 powder coated, RAL7037, available only with 15L/20L/30L/40L | 309050349 |
| MDX-A YOKE D | 45°Angled YOKE, 0-90° adjustable, SUS304 powder coated, RAL7037, available only with 50L/60L/70L | 309050351 |
| GLCO-03 | 3ft Cord (SOOW 14AWG*3, 105°C, 600V) with cable gland, for C1D2 and non-hazardous only | 204020003 |

HAZARDOUS LOCATION LIGHTING BASICS

Atmosphere Groups

| Substance | Hazard Class | Division Groups | Zone Groups |
|--|----------------------------------|----------------------|-------------------|
| Acetylene | Class I Flammable Gases | Group A | IIC |
| Hydrogen | | Group B | IIC |
| Ethylene | | Group C | IIB |
| Propane | | Group D | IIA |
| Methane | | Group D | IIA ² |
| Combustible Metal Dusts | Class II Combustible Dusts | Group E ¹ | IIIC ³ |
| Combustible Carbonaceous Dust | | Group F | IIIB ³ |
| Combustible Dusts not in Group E or F (Flour, Grain, Wood, Plastics, Chemicals) | | Group G | IIIB ³ |
| Combustible Fibers and Flyings | Class III Fibers and Flyings | Not Applicable | IIIA ³ |

Note 1: Group E is applicable to Class II, Division 1 only.
 Note 2: Methane is a Group IIA Gas for non-mining applications.
 Note 3: Group IIIA, IIIB and IIIC have not been adopted by the Canadian Electrical Code.

Temperature Classification

| Max. Surface Temperatures | NEC® 500 CEC® | NEC® 500/IEC-Group II |
|---------------------------|---------------|-----------------------|
| 450°C(842°F) | T1 | T1 |
| 300°C(572°F) | T2 | |
| 280°C(536°F) | T2A | T2 |
| 260°C(500°F) | T2B | |
| 230°C(446°F) | T2C | |
| 215°C(419°F) | T2D | |
| 200°C(392°F) | T3 | T3 |
| 180°C(256°F) | T3A | |
| 165°C(329°F) | T3B | |
| 160°C(320°F) | T3C | |
| 135°C(275°F) | T4 | T4 |
| 120°C(248°F) | T4A | |
| 100°C(212°F) | T5 | T5 |
| 85°C(185°F) | T6 | T6 |

Classification of Divisions and Zones

| Hazard Level | Division Scheme | Zone Scheme | Definitions |
|----------------------------------|-----------------|------------------|--|
| Continuous Hazard | Division 1 | Zone 0 / Zone 20 | A place in which an explosive atmosphere is continually present |
| Intermittent Hazard | | Zone 1 / Zone 21 | A place in which an explosive atmosphere is likely to occur in normal operation |
| Hazard Under Abnormal Conditions | Division 2 | Zone 2 / Zone 22 | A place in which an explosive atmosphere is not likely to occur in normal operation, but may occur for short periods |

IP Ratings

| 1st No. | Solid Objects |
|---------|--|
| 0 | No protection |
| 1 | Objects greater than 50mm |
| 2 | Objects greater than 12.5mm |
| 3 | Objects greater than 2.5mm |
| 4 | Objects greater than 1mm |
| 5 | Dust protected |
| 6 | Dust proof |
| 2nd No. | Liquids |
| 0 | No protection |
| 1 | Vertically dripping |
| 2 | Dripping up to 15° |
| 3 | Limited spraying |
| 4 | Splashing from all directions |
| 5 | Hosing jets from all directions |
| 6 | Strong hosing jets from all directions |
| 7 | Temporary immersion |
| 8 | Continuous immersion |
| 9 | Steam-jet cleaning |

IK Ratings

| IK Code | Level of Protection Achieved |
|---------|--------------------------------------|
| IK00 | Not protected |
| IK01 | Protected against 0.14 joules impact |
| IK02 | Protected against 0.2 joules impact |
| IK03 | Protected against 0.35 joules impact |
| IK04 | Protected against 0.5 joules impact |
| IK05 | Protected against 0.7 joules impact |
| IK06 | Protected against 1 joules impact |
| IK07 | Protected against 2 joules impact |
| IK08 | Protected against 5 joules impact |
| IK09 | Protected against 10 joules impact |
| IK10 | Protected against 20 joules impact |



1(262) 456-5002
contact@redskylighting.com
www.redskylighting.com

RED SKY LIGHTING LLC
9370 Pittsburgh Ave Rancho
Cucamonga, CA 91730, USA

Disclaimer

The product information provided is, to the best of Red Sky Lighting's knowledge, accurate as of the date of publication. However, purchasers and end-users of Red Sky Lighting's products should refer to the documentation available on www.redskylighting.com for the most up-to-date and controlling product specifications, installation manuals, sales terms and conditions, and warranty terms. To the extent any contract is formed for the sale of Red Sky Lighting's products, whether directly with Red Sky Lighting or through any third party, the versions of such documentation posted on www.redskylighting.com as of the date of sale shall govern and prevail over any inconsistent information that may be provided elsewhere. In the event of a conflict between the information contained in this document and that available on www.redskylighting.com, the website documentation shall prevail.