

## HazLoc LED Luminaire

### Servicing

- To avoid personal injury, disconnect power to the light and allow the unit to cool down before performing maintenance.
- Perform visual, electrical, and mechanical inspections on a regular basis. The environment and frequency of use should determine this. However, it is recommended that checks should be made at least once a year. Frequency of use and environment should determine this.
- The external glass should be cleaned periodically to ensure continued luminaire performance. Clean the glass with a clean, damp, non-abrasive, lint-free cloth. If this is not sufficient, use a mild soap or a liquid cleaner. Do not use an abrasive, strong alkaline or acid cleaner as damage may occur.
- Inspect the cooling fins on the luminaire to ensure that they are free of any contamination (i.e. excessive dust build-up). Clean with a non-abrasive cloth if needed.
- Mechanically check to make sure all parts are properly assembled.
- Electrically check to make sure that all connections are clean and tight.

### Warranty

We warrant that each of our LED lighting luminaire (the "Product(s)") that are purchased while this Warranty is in effect will be free from defects in materials and workmanship for the period of time specified in the table below (the "Warranty Period"). The Warranty Period runs from the date of original purchase from its authorized distributor/dealer.

We will repair, or at our option, replace the defective product (exterior finish, housing and heat sinks, lens, LED engine, power supply) during the standard warranty period. This warranty applies only to the repair or replacement of the product and only when the product is properly handled, installed and maintained according to our instructions.

This warranty excludes defects resulting from improper installation, acts of God, fire, vandalism or civil disturbances, power surges or improper power supply, and corrosive environment installations.

This warranty does not cover equipment, systems or components from other manufacturers that the Purchaser uses in conjunction with the Product. Any repair, alteration or modification of the Product, including replacement of Product components with components of other manufacturers will void the warranty in its entirety.

Product	Which Model Nos. are Covered by this Warranty	Warranty Period
HazLoc LED Luminaire	RND2-XX-XXX	Five (5) Years

### Limitation of Liability

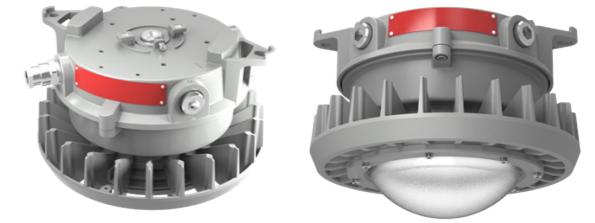
THE FOREGOING WARRANTY IS EXCLUSIVE, AND IS THE SOLE REMEDY FOR ANY AND ALL CLAIMS, WHETHER IN CONTRACT, IN TORT OR OTHERWISE ARISING FROM THE FAILURE OF PRODUCT AND IS IN LIEU OF ALL OTHER WARRANTIES, EXPRESS OR IMPLIED, INCLUDING ALL WARRANTIES OF MERCHANTABILITY OR FITNESS FOR A PARTICULAR PURPOSE, WHICH WARRANTIES ARE HEREBY EXPRESSLY DISCLAIMED TO THE EXTENT PERMITTED BY LAW AND, IN ANY EVENT, SHALL BE LIMITED TO THE WARRANTY PERIOD SPECIFIED ABOVE. THE LIABILITY OF SHALL BE LIMITED TO THE TERMS OF THE EXPRESS WARRANTY SET FORTH HEREIN. IN NO EVENT WILL BE LIABLE FOR ANY SPECIAL, INCIDENTAL OR CONSEQUENTIAL DAMAGES INCLUDING, WITHOUT LIMITATION, DAMAGES RESULTING FROM LOSS OF USE, PROFITS, BUSINESS OR GOODWILL, LABOR COSTS, REMOVAL OR INSTALLATION COSTS, DECREASE IN THE LIGHT OUTPUT OF THE LAMP, AND/OR DETERIORATION IN THE LAMP'S PERFORMANCE: WHETHER OP NOT HAS BEEN ADVISED OF THE POSSB LTY THEREOE UNDER NO CIRCUMSTANCES SHALL 'S ENTIE LIABILITY FOR A DEFECTIVE RODUCT EXCEED THE PURCHASE PRICE OF THAT PRODUCT. WARRANTY SERVICES PROVIDED UNDER THESE TERMS AND CONDITIONS DO NOT ENSURE THE UNINTERRUPTED OPERATION OF PRODUCTS; SHALL NOT BE LIABLE FOR DAMAGES CAUSED BY ANY DELAYS INVOLVING WARRANTY SERVICE.

This Limited Warranty gives you specific legal rights and you may also have other rights that may vary from state to state. Because some states or jurisdictions do not allow the exclusion or limitation of liability for consequential or incidental damages, this limitation may not apply to you.

## HazLoc LED Luminaire

### General Safety Information

- To reduce the risk of death, personal injury or property damage from fire, electric shock, falling parts, cuts/abrasions and other hazards, please read all warnings and instructions included with and on the fixture box and all fixture labels.
- Before installing, servicing, or performing routine maintenance upon this equipment, please follow these general precautions.
- Commercial installation, service and maintenance of luminaires should be performed by a qualified licensed electrician.
- DO NOT INSTALL DAMAGED PRODUCT!
- Make sure that the supply voltage is the same as the luminaire voltage.
- Do not install where the marked operating temperatures exceed the ignition temperatures of the hazardous atmosphere.
- Do not operate in ambient temperatures above those indicated on the luminaire nameplate.
- All gasket seals must be clean and undamaged.
- To ensure safety, a safety rope can be used to fix the luminaire before installation.



Luminaire for Use in Hazardous Locations  
The picture is for illustration purposes only.  
Your model may vary

### WARNING:

#### RISK OF ELECTRICAL SHOCK

- Turn off electrical power at fuse or circuit breaker box before wiring fixture to the power supply.
- Turn off the power when you perform any maintenance.
- Verify that supply voltage is correct by comparing it with the luminaire label information.
- Make all electrical and grounded connections in accordance with the National Electrical Code and any applicable local code requirements.
- All wiring connections should be capped with UL approved wire connectors.
- Luminaire must be supplied by a wiring system with an equipment grounding conductor.

### CAUTION:

#### RISK OF INJURY

- Wear gloves and safety glasses at all times when removing luminaire from carton, installing, servicing or performing maintenance.
- Avoid direct eye exposure to the light source while it is on.
- Account for small parts and destroy packing material, as these may be hazardous to children.

### CAUTION:

#### RISK OF FIRE

- Keep combustible and other materials that can burn away from luminaire and lamp/lens.
- MIN 90°C SUPPLY CONDUCTORS.

### MODELS:

- RND2-1-2-3-4-5-6-7-8
- 1 = Wattage ( 35=35W, 40=40W, 45=45W, 55=55W, 60=60W, 65=65W )
- 2 = Voltage ( 120-277=120-277 Vac, 347-480=347-480 Vac)
- 3 = CCT ( 3K=3000K, 4K=4000K, 5K=5000K )
- 4 = Beam ( 60=60°, 120=120° )
- 5 = Rating ( H2=C1D2/C2D1/C3 )
- 6 = Lens ( CG=Flat Clear Glass, DG=Flat Diffuse glass, DLG=Diffuse Drop Lens Glass )
- 7 = Color ( GRY=Grey )
- 8 = Mounting ( PND=Pendant, YKE=Yoke )

### Operating characteristic:

- Rated Voltage: 120-277 Vac or 347-480 Vac, 50/60Hz
- Ambient Temperature Range: -40°F ~ 140°F (-40°C ~ 60°C)

**Model Round is suitable for use in the following hazardous (classified) areas as defined by the National Electrical Code (NEC) and Canadian Electrical Code (CEC):**

#### Hazardous Locations

Class I, Division 2 Groups A, B, C, D  
Class II, Division 1 Groups E, F, G  
Class II, Division 2 Groups F, G  
Class III

#### Compliances

UL 844  
UL 1598  
UL 1598A

#### Environmental Ratings

Suitable for wet location  
IP 66

CSA C22.2 NO. 250.0:21, 5th Ed  
CSA C22.2 No. 137, Edition: 2

Refer to the luminaire name-plate for specific classification information, maximum ambient temperature suitability and corresponding operating temperature (T-Code).

## HazLoc LED Luminaire

### Wiring

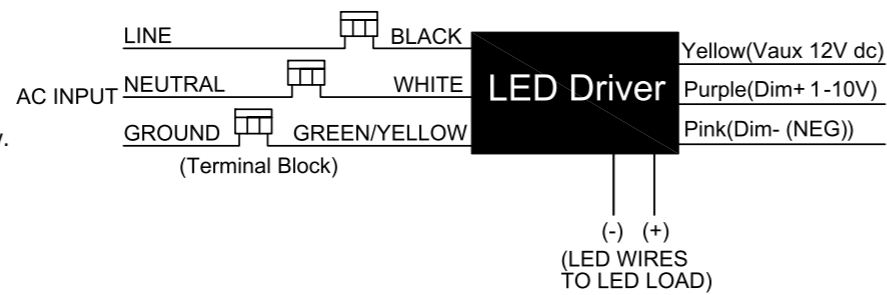
**CAUTION:** Turn off electrical power at fuse or circuit breaker box before wiring luminaire to the power supply.

All units must be individually connected to the AC supply.

- Black = Line
- White = Neutral
- Green = Ground

Dimming control wire\*: Yellow =Vaux 12V dc  
 Purple = Dim+ 1~10V input  
 Pink= Dim- (NEG)

\* Only available for RND2-35-120-277, RND2-45-120-277, RND2-55-120-277, RND2-65-120-277, RND2-40-347-480



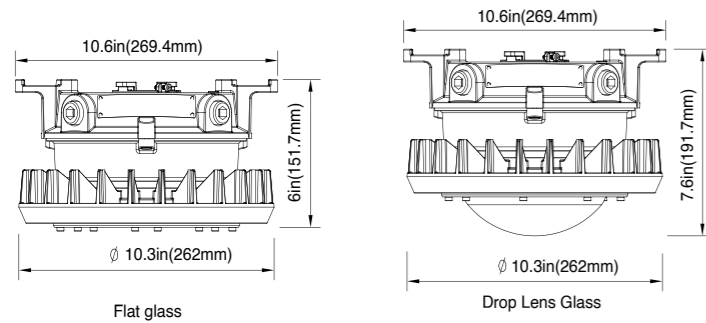
### Installation

#### Electrical Connection:

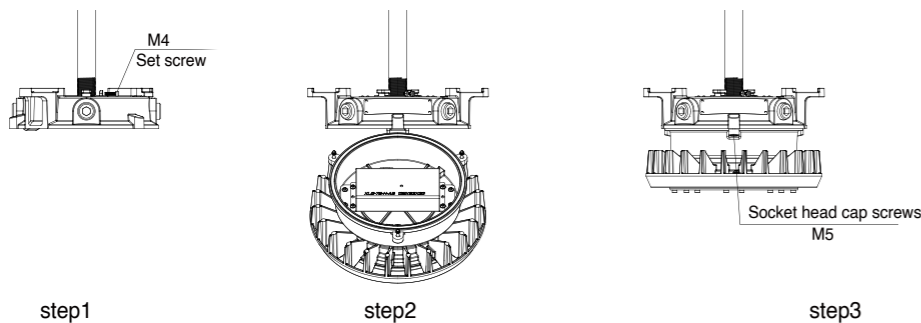
1. Connect field supply wires to luminaire wire leads (or Wago connectors).
2. Wire per wiring diagram and per required electrical codes.
3. Close the tank cover, making sure that all wires are safely inside the box.
4. Check the tightness of conduit and Tank Cover.
5. Turn power on.

**Note:** All installation must refer to Red Sky Lighting " NPT Assembly Instructions" to prevent water leakage.

#### Product Dimensions



#### 1. Pendant :



**Step 1.** Loosen the three (M5) hexagon socket head cap screws of the tank cover with torque value (4 N-m). Thread the tank cover onto the NPT 3/4 inch conduit. Tighten the M4 set-screw.

**Step 2.** Hang the tank onto the hinge hook of the tank cover and connect field supply wires to luminaire wire leads (or Wago connectors) according to the wiring diagram.

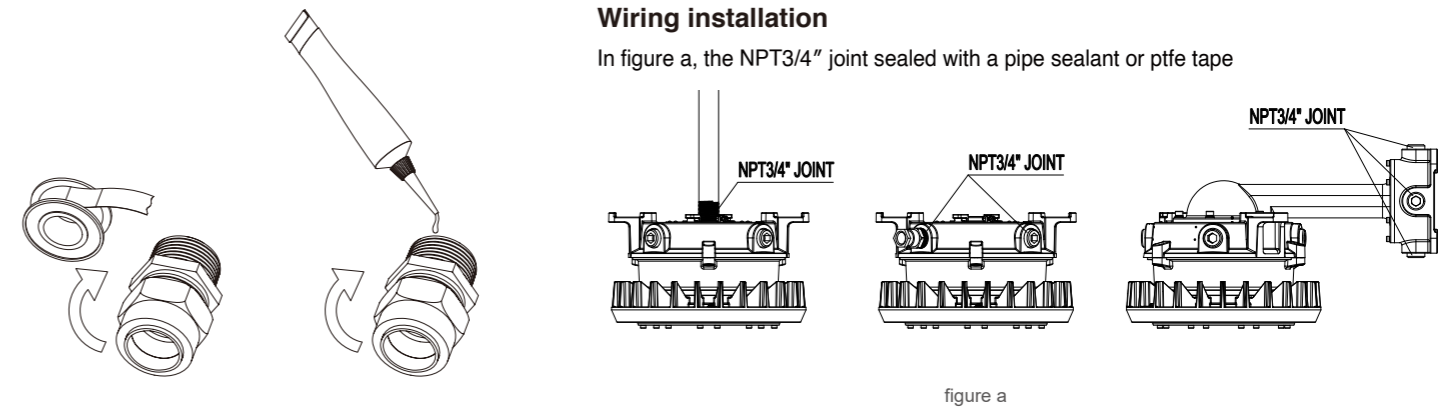
**Step 3.** Close the tank cover, making sure that all wires are safely inside the tank. Tighten three captive closing screws (M5) to (4 N-m).

## HazLoc LED Luminaire

### NPT Assembly Instructions:

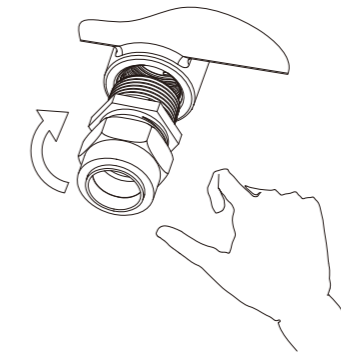
**STEP 1:** Inspect the port and fitting to ensure that both are free of contaminants and excessive burrs and nicks.

**STEP 2:** Apply a stripe of an anaerobic liquid pipe sealant around the male threads leaving the first two threads uncovered. If no liquid sealant is available, wrap Teflon tape (width of 12.7mm and thickness of 0.1mm) 2.5 - 3 turns in a clockwise direction, viewed from the pipe end, leaving the rest two threads uncovered.

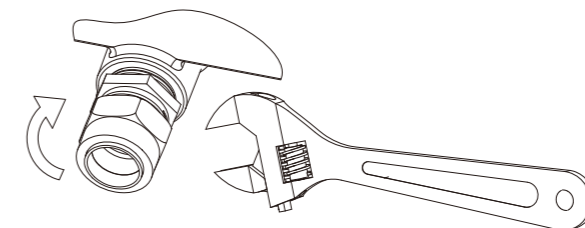


**CAUTION:** Teflon tape and some pipe sealants are destructive to hydraulic components. Always use extreme caution and follow manufacturer's recommendations for proper application of any sealant in order to prevent contamination.

**STEP 3:** Screw the finger tight into the port.



**STEP 4:** Wrench tighten the fitting to the correct Turns Past Finger Tight position. A properly assembled fittings total thread engagement should be ≥5 turns.



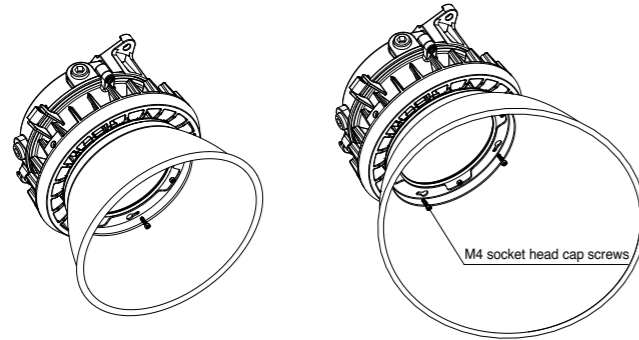
**CAUTION:** Never back off an installed pipe fitting to achieve proper alignment. Loosening installed pipe fittings will corrupt the seal and contribute to leakage and failure. (\*Applicable standard: ASME B1.20.1-2013)

## HazLoc LED Luminaire

### Visor (GLARE SHIELD),90 or 25 Deg installation (kit sold separately)

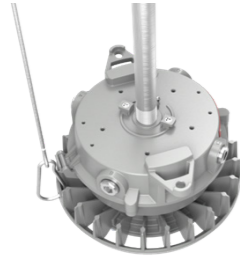
**Step 1.** Remove the four M4 socket head cap screws on the body cover every other one. ( torque:2 N.m)

**Step 2.** Install the original 4 M4 socket head cap screws according to the position shown in the picture to fix the glare shield. ( torque:2 N.m)



### INSTALLATION CHECKLIST

1. Verify if the steel pipe or cord grip are installed to at least five (5) full threads into the conduit entries of the fixture.



2. Verify field supply wires to luminaire ( Wago connectors ) per wiring diagrams and all electrical connections are tightened.



3. Verify all Wires are safely and neatly inside Tank , Gasket of the housing is placed into the slot nicely and evenly.



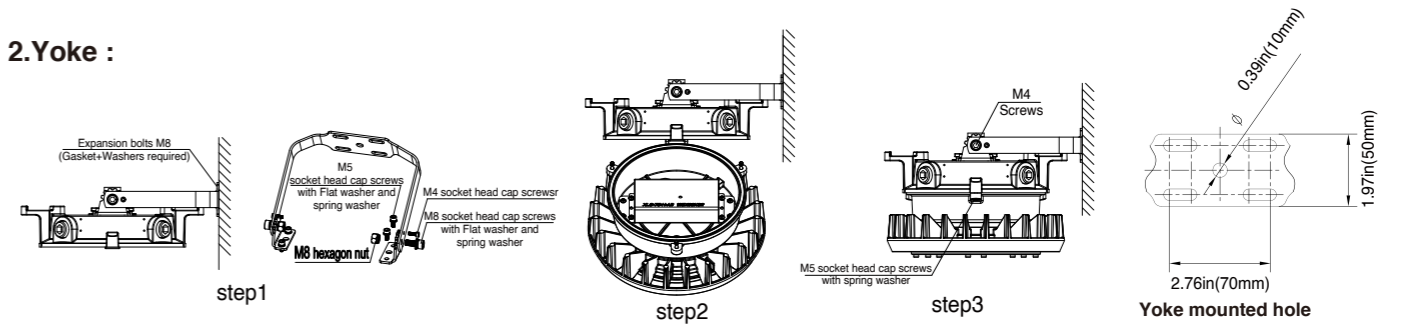
4. Verify the three M5 captive closing screw is tightened to (4 N-m).



5. Follow Red Sky Lighting " NPT Assembly Instructions" to prevent water leakage.

## HazLoc LED Luminaire

### 2.Yoke :

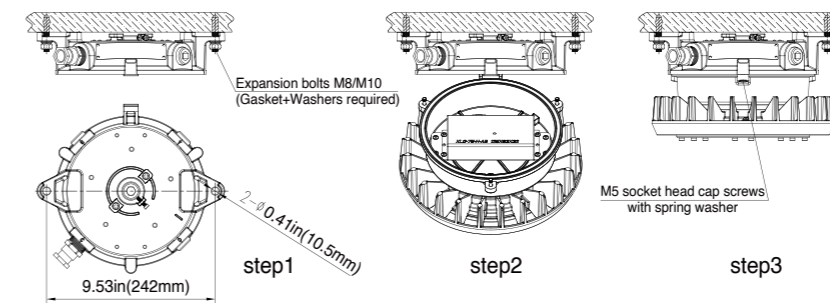


**Step 1.** Loosen the three (M5) hexagon socket head cap screws of the tank cover with torque value (4 N-m). Secure the yoke and Tank Cover with 4 (M8) expansion bolts (not provided) directly to a structural member; Adjust the angle (6x30°) of the yoke and fix the position with M4 screws.

**Step 2.** Hang the fixture onto the hinge hook of the hood. Connect field supply wires to luminaire wire leads (or Wago connectors). Wire per wiring diagram.

**Step 3.** Close the tank cover, making sure that all wires are safely inside the tank. Tighten three captive closing screws (M5) to (4 N-m).

### 3.Ceiling :

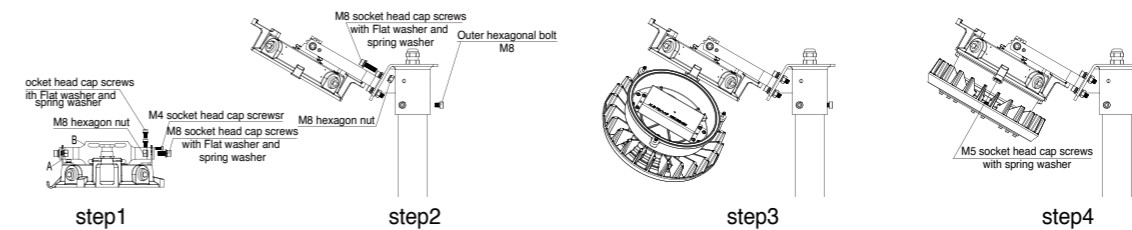


**Step 1.** Loosen the 3 (M5) hexagon socket head cap screws of the tank cover with 4 N-m torque value. Mark and drill desired location on the mounting surface. Secure the tank cover with 2 (M8 / M10) expansion bolts (not provided) directly to a structural member.

**Step 2.** Thread onto an NPT 3/4 inch conduit. Hang the tank onto the hinge hook of the tank cover. Connect field supply wires to luminaire wire leads (or Wago connectors) according to the wiring diagram.

**Step 3.** Close the tank cover, making sure that all wires are safely inside the tank. Tighten three captive closing screws (M5) to (4 N-m).

### 4.Pole (Pole Type Stanchion) :



**Step 1.** Loosen the three (M5) hexagon socket head cap screws of the tank cover with 4 N-m torque value. Mount the yoke part A and B combination on the tank cover with M5 screws and M8 screws & nuts, adjust the angle of the yoke (6x30°) and lock it with M4 screws.

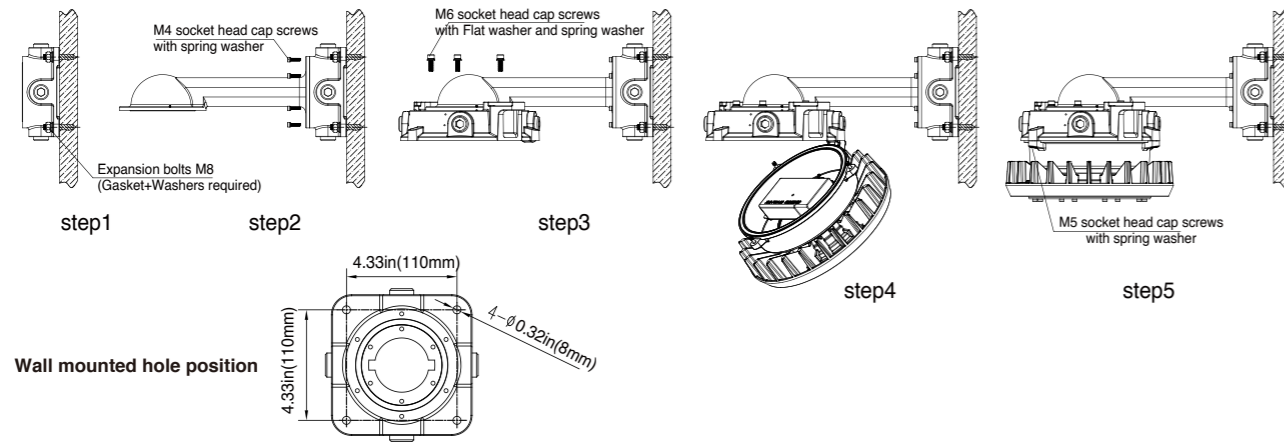
**Step 2.** Attach the yoke with Tank Cover to the pole mount yoke with M8 screws & nuts, then the pole mount yoke is snapped into the upper end of the strut, which is NPT 2" (2.375" pole OD) , and locked with M8 bolts.

**Step 3.** Hang the tank onto the hinge hook of the tank cover. Connect field supply wires to luminaire wire leads (or Wago connectors) according to the wiring diagram.

**Step 4.** Close the tank cover, making sure that all wires are safely inside the tank. Tighten three captive closing screws (M5) to (4 N-m).

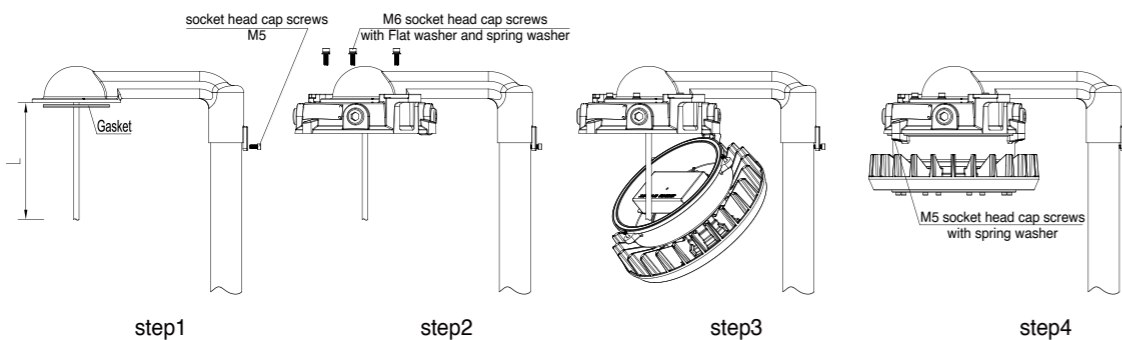
### HazLoc LED Luminaire

#### 5. Wall 25°/Wall 90° :



- Step 1.** Mark and drill desired location on mounting surface, Secure the junction box (provided) with 4 (M8) expansion bolts (not provided) directly to a structural member; thread onto a NPT 3/4 inch conduit.
- Step 2.** Pull field wiring into the wall mount adapter , with the cable exposed to the appropriate length of the adapter. Secure the adapter with 6 (M4) screws (provided) directly to the junction box. Make sure the gasket of the junction box is properly inserted into the slot.
- Step 3.** Loosen the 3 (M5) hexagon socket head cap screws of the tank cover with torque value (4 N-m). Use the 5 (M6) hexagon socket screws with torque value (5 N-m.) to fix the tank cover onto the adapter. Make sure the gasket of the adapter is properly inserted into the slot.
- Step 4.** Hang the tank onto the hinge hook of the tank cover. Connect field supply wires to luminaire wire leads (or Wago connectors). Wire per the wiring diagram.
- Step 5.** Close the tank cover, making sure that all wires are safely inside the tank. Tighten three captive closing screws (M5) to (4 N-m).

#### 6. Stanchion 90° / Stanchion 25°:

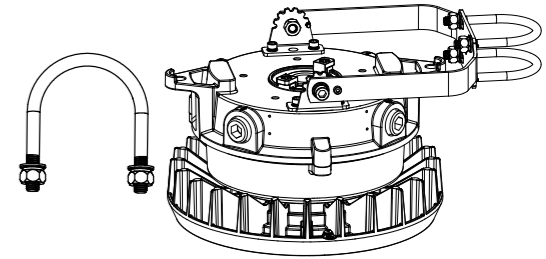


- Step 1.** Make sure the gasket of the adapter is properly inserted into the slot. Connect the adapter to the NPT 1-1/2" or NPT 1-1/4" conduit with the cable exposed to the appropriate length of the adapter. determine the proper orientation, and tighten the (M5) set screw.
- Step 2.** Loosen the 3 (M5) hexagon socket head cap screws of the tank cover with torque value (4 N-m). Use the 5 (M6) hexagon socket screws with torque value (5 N-m.) to fix the tank cover onto the adapter.
- Step 3.** Hang the tank onto the hinge hook of the tank cover. Connect field supply wires to luminaire wire leads (or Wago connectors) according to the wiring diagram.
- Step 4.** Close the tank cover, making sure that all wires are safely inside the tank. Tighten three captive closing screws (M5) to (4 N-m).

### HazLoc LED Luminaire

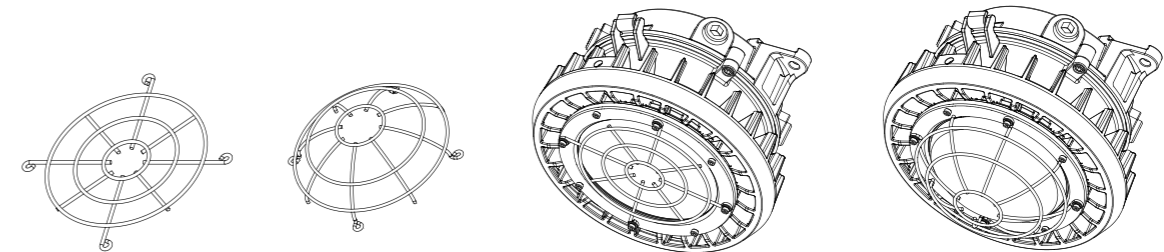
#### 7. Pole (Kit sold separately):

- Step 1.** Check diameter of the pipe to make sure you are using the correct size clamp.
- Step 2.** Place the Fixture yoke against the installed pipes.
- Step 3.** Place the clamp (U-bolts) on the pipe and fit it through the openings in the yoke.
- Step 4.** Adjust fixture to the desired angle. Insert and tighten the supplied locking nuts and washers to secure the clamp to the pipe.



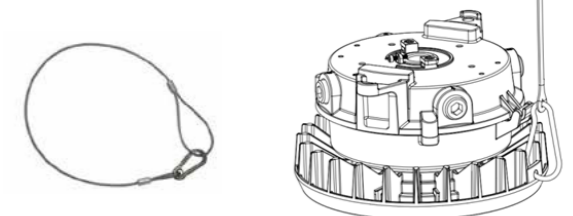
#### Wire guard installation (kit sold separately)

- Step 1.** Loosen the 4 (M4) hexagon socket head cap screws of the body cover with torque value 5 N-m.
- Step 2.** Locate and center the guard to the outside of the body cover with the (4x) clips aligned with the holes of the screws.
- Step 3.** Install and tighten the 4 (M4) screws through the mounting clips and into the body cover screw holes as shown in torquing to (3 N-m).



#### Safety cable installation (kit sold separately)

- Step 1.** Install Secondary Retention Cable to secure location per standards.
- Step 2.** Secure Carabiner through thru-holes (Dia-9mm) on top of fixture.



#### Hanging Mount: Eyebolt or Hook with 3/4" NPT installation (kit sold separately)

- Step 1.** Screw the eyebolt or hook into the NPT3/4" interface on the upper of the tank cover, and total thread engagement should be ≥5 turns.
- Step 2.** Tighten the (M4) set screw. ( torque:3 N.m)

