

# BLOCK SERIES C1

Block Series C1 LED Luminaire is designed for installations where moisture, dirt, dust, corrosion and vibration may be present, or areas where wind, water, snow or high ambient can be expected.

They can be used in locations made hazardous by the presence of flammable vapors or gases or combustible dusts as defined by the IECEx.

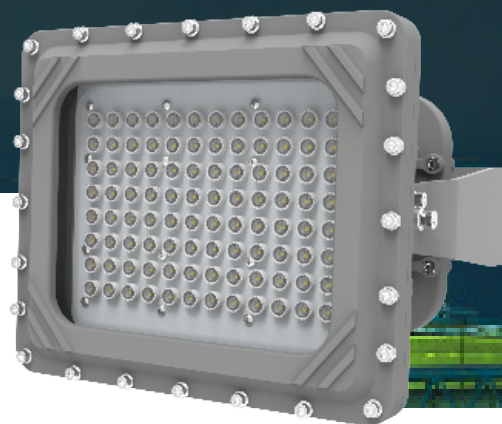
BLK-C1 Series is ideal for retrofit of existing HPS/MH and offers higher efficacy for increased energy savings, lower maintenance costs and shorter paybacks.

## SPECIFICATION

POWER	: 80/100/150W
VOLTAGE / FREQUENCY	: 100-240V AC 50/60Hz
POWER FACTOR	: ≥95%
SURGE PROTECTION	: 4KV
LUMEN OUTPUT	: 10400/13000/19500Lm
LUMEN EFFICIENCY	: 130Lm/W @5000K
BEAM ANGLE	: 25°/60°/120°
CCT	: 3000K/4000K/5000K
COLOUR RENDERING INDEX (CRI)	: RA>70
AMBIENT TEMPERATURE	: -25°C ~ +50°C
HOUSING MATERIAL	: Copper-free Aluminum
FINISH	: Polyester powder coating for uniform corrosion resistance
HARDWARE	: Stainless steel 316
LENS MATERIAL	: Tempered glass
MOUNTING OPTIONS	: Pole, Ceiling, Wall
CABLE ENTRIES	: 2 x NPT3/4 (two rear)
WEIGHT	: 80W: 15.2Kg/33.5Lb : 100W: 15.3Kg/33.7Lb : 150W: 15.5Kg/34.2Lb
DIMENSION	: 80/100/150W: 12.9x10.7x6.9 in (328×271×176 mm)
WARRANTY	: 5-Year



SCAN FOR LATEST PRODUCT INFO



## RATINGS & CERTIFICATIONS

IEC

- > Ex d IIB T6 Gb
- > Ex tb IIIC T85°C Db
- > Zone 1&2 ( Explosive gas )
- > Zone 21&22 ( Combustible dust )



## APPLICATION

Power Plants  
Heavy Industrials Storage Facility  
Paper Mills  
Wastewater Treatment Plants  
Loading Docks Platforms  
Shipyards  
Chemical Processing Facility  
Petrochemical Processing Facility

## FEATURES

- > Best-in-class system efficacy-Up to 130Lm/W
- > Universal Voltage: AC100-240V (50/60Hz)
- > Shock-and vibration-resistant-Durable LEDs with solder-less board connection
- > Instant illumination and restrike-no warm-up time required
- > Safe and reliable heat transfer
- > Copper-free aluminum body and frame-corrosion resistant
- > All exposed fasteners with quality stainless steel
- > High Temperature silicone gasketing
- > Thermal shock and impact resistant glass lens
- > Harsh & Hazardous Duty

**EXAMPLE:** BLK-80-100-240-5K-120-C1-CG-GRY-YKE

BLK	80	100-240	5K	120	C1	CG	GRY	YKE
<b>FIXTURE</b>	<b>WATTAGE</b> 80 - 80W 100 - 100W 150 - 150W	<b>VOLTAGE</b> 100-240	<b>CCT</b> 5K - 5000K 4K - 4000K 3K - 3000K	<b>BEAM</b> 120 - 120° 60 - 60° 25 - 25°	<b>RATING</b> C1 - Zone1, 21	<b>LENS</b> CG - Clear Glass	<b>COLOR</b> GRY - Grey	<b>MOUNTING</b> YKE - Yoke **

## ACCESSORIES (ORDERED SEPARATELY)

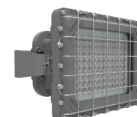
Item	Description	MPN Code
BLK-YOKE	: Yoke Mount, BLK SERIES, SS304, Power Coated Grey RAL7037	309050055
BLK-360Y	: 360° rotation Yoke Mount, BLK SERIES, SS304, Power Coated Grey RAL7037	201010115
BLK-AVBY	: Anti-vibration Yoke Mount, BLK SERIES, SS304, Power Coated Grey RAL7037	309050298
STAN01 ***	: Slip-Fit Stanchion Mount Kit, BLK SERIES, SS304, Power Coated Grey RAL7037	309050300
SFCB01	: Safety Cable Kit, BLK & RDX SERIES, SS304	106060018
BLK-WG	: Lens Wire Guard, BLK SERIES, SS304	106060013
SP1	: 10KV Surge Protector 120~277V	309050060
BLK-VISO	: VISOR, BLK SERIES, SS304, Power Coated Grey RAL7037	101040169

\*\* BLK-YOKE Pre-installed as standard, Contact sales for other Yoke options.

\*\*\* REQUIRES A YOKE MOUN



YOKE



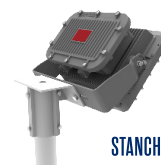
WIRE GUARD



WALL

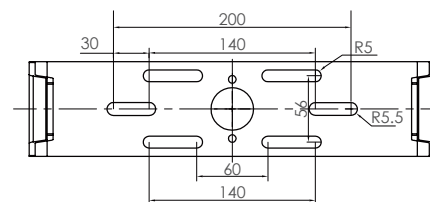
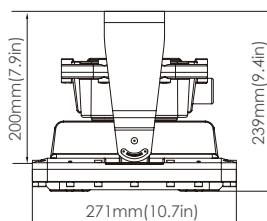
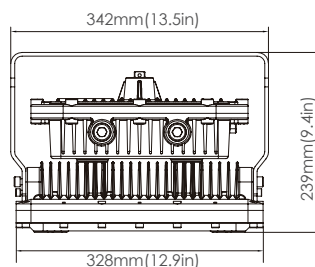


SAFETY CABLE

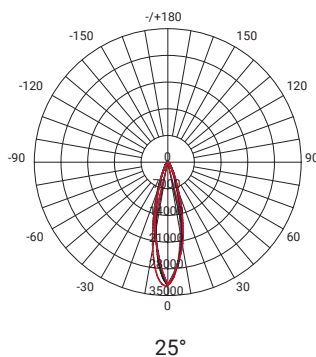


STANCHION

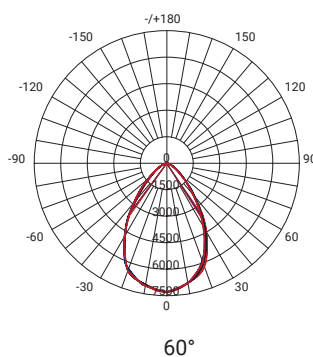
## DIMENSIONS



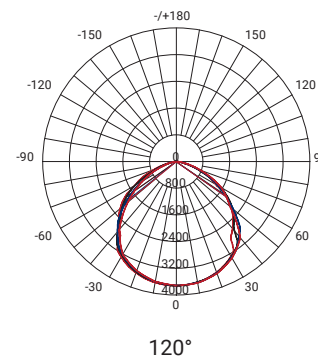
## PHOTOMETRICS



25°



60°



120°