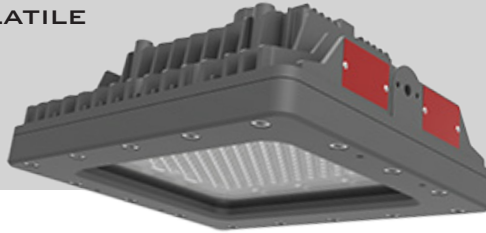


BLOCK-MINI SERIES H1

THIS CLASS I DIVISION 1, SUPERIOR DESIGNED, LIGHTWEIGHT, COMPACT, LED, AREA LIGHT IS MADE FOR THE MOST DEMANDING ENVIRONMENTS AND PROVIDES UNMATCHED LIGHTING PERFORMANCE WITH UP TO 200 LUMENS PER WATT. IT IS IDEALLY SUITED FOR LOW MOUNTING HEIGHTS IN OFFSHORE, GAS, MINING, PARTICULATE, CHEMICAL AND OTHER VOLATILE ENVIRONMENTS.

SHOWN WITH PENDANT MOUNT

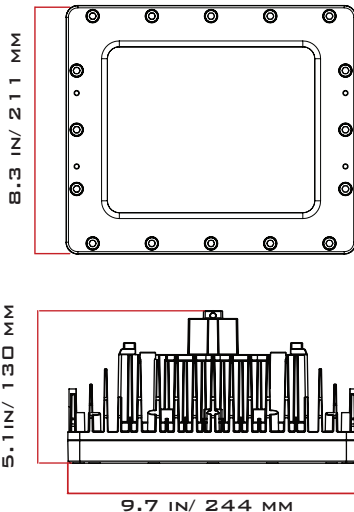


CERTIFICATIONS AND RATINGS

CLASS I DIVISION 1, GROUPS B,C,D
CLASS I DIVISION 2, GROUPS A,B,C,D
CLASS II DIVISION 1, GROUPS E,F,G
CLASS III
CSA C22.2 No. 137-M1981; 25-1966
CSA C22.2 No. 250.0-08; 250.13
UL 844 HAZARDOUS LOCATION
UL 1598A MARINE VESSELS
UL 1598 WET LOCATIONS
UL 8750 LED SAFETY



DIMENSIONS



WEIGHT

13.9 LBS/ 6.3 KG

- * 347-480V ONLY AVAILABLE IN 50W
- * 50W ONLY AVAILABLE IN 347-480V
- ^ -40°C TO 64°C FOR 60W OPTION
- ++ LUMEN OUTPUT REPRESENTS TYPE 5 DISTRIBUTION AND TEMPERED GLASS LENS. OUTPUT WILL CHANGE DEPENDENT ON OPTIONS

SPECIFICATIONS

VOLTAGE/FREQUENCY	AC 120-277V 50/60HZ AC 347-480V 50/60HZ*
SURGE PROTECTION	4KVA (STANDARD) 10 KVA (OPTION)
POWER FACTOR	≥95% @120V
THD	<20%
POWER	21W 40W 50W* 60W
LUMEN OUTPUT ⁺⁺	4,220LM 6,500LM 7,180LM 8,515LM
CCT	2700K 4000K 5000K
BEAM ANGLES	TYPE II, III, V
COLOR RENDERING INDEX	RA>70
OPERATING TEMPERATURE	-40°F TO 149°F (-40°C TO 65°C)^
T-CODE RATINGS	T6 (C1D1) T4A (C1D2) T6 (C2D1)
CONSTRUCTION	MARINE GRADE CAST ALUMINUM
LENS MATERIAL	TEMPERED GLASS
HARDWARE	316 STAINLESS STEEL
FINISH	THERMOSET POWDERCOAT
CONNECTION	3/4" NPT W/ 3' 18/3 CORD OR LEADS
IP / IK RATING	IP66 / IP67 / IK08 (GLASS)
L70	>130,000 HOURS
WARRANTY	LEDs: 10 YEARS DRIVER: 7 YEARS

ORDER INFORMATION

BLOCK-MINI SERIES

EXAMPLE: BLM-40-120-277-5K-T5-H1-CLR-PEND-CORD

BLM	40	120-277	5K	T5	H1	CG	PEND	CORD
FIXTURE	WATTAGE	VOLTAGE	CCT	BEAM	RATING	LENS	MOUNTING	WIRING***
	21W 40W 50W* 60W	120-277 347-480*	5K-5000K 4K-4000K 3K-2700K**	T2-TYPE II T3-TYPE III T5-110°	H1-CID1	CG - CLEAR GLASS DG - DIFFUSE GLASS	PENDANT ⁺	CORD LEAD

- * 50W ONLY WITH AC 347-480V
- * AC 347-480V ONLY WITH 50W
- ** SPECIAL ORDER
- *** MUST BE ORDERED WITH FIXTURE
- + PENDANT MOUNT IS STANDARD

MOUNTING ACCESSORIES

YOKE - 304 STAINLESS STEEL YOKE BRACKET
SP1 - 10KVA SURGE PROTECTOR FOR 120-277V***
SP2 - 10KVA SURGE PROTECTOR FOR 347-480V***

OTHER ACCESSORIES

WGG - WIRE GUARD FOR GLASS LENS
SCFB - 316 STAINLESS SAFETY CABLE

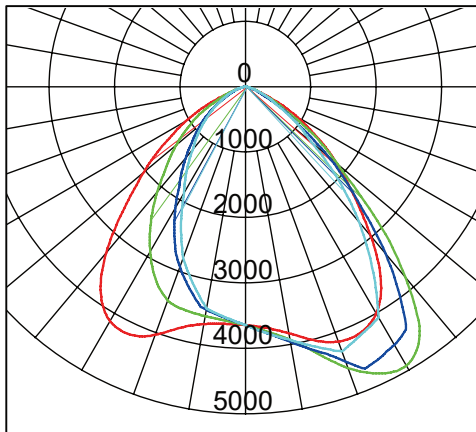
WIRING REQUIREMENTS

CORD - 3/4"NPT WITH 3' SJTOW, 18/3 CORD
LEAD - 3' LEADS

CONTACT FACTORY FOR DIMMING OPTIONS

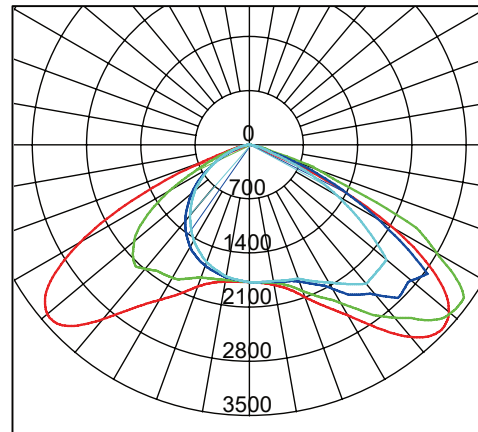
PHOTOMETRICS

TYPE II



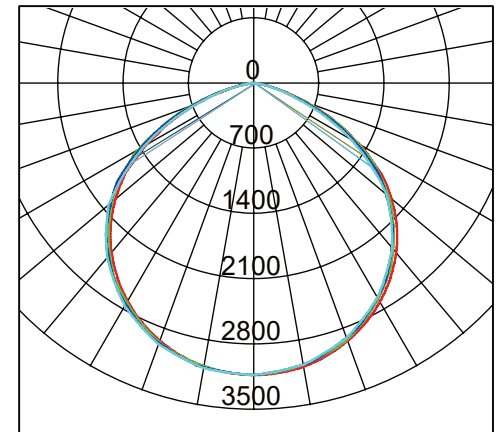
— C0/180,102.1
— C30/210,82.2
— C60/240,73.0
— C90/270,70.9

TYPE III



— C0/180,134.6
— C30/210,133.3
— C60/240,98.3
— C90/270,102.0

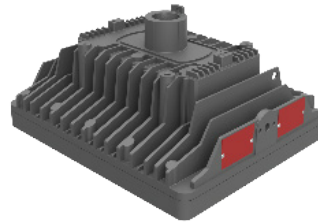
TYPE V



— C0/180,112.5
— C30/210,113.7
— C60/240,112.9
— C90/270,111.4



SHOWN WITH WIRE GUARD OPTION



PENDANT MOUNT



SHOWN WITH YOKE MOUNT
AND DIFFUSED GLASS LENS